

TXNL1 Antibody



PACO30912

Product Information

Size:

50ug

Reactivity:

Human

Source:

Rabbit

Isotype:

IgG

Applications:

ELISA, IHC

Recommended dilutions:

ELISA:1:2000-1:10000, IHC:1:20-1:200

Protein Background:

Active thioredoxin with a redox potential of about -250 mV.

Gene ID:

TXNL1

Uniprot

O43396

Synonyms:

Thioredoxin-like protein 1 (32 kDa thioredoxin-related protein), TXNL1, TRP32 TXL
TXNL

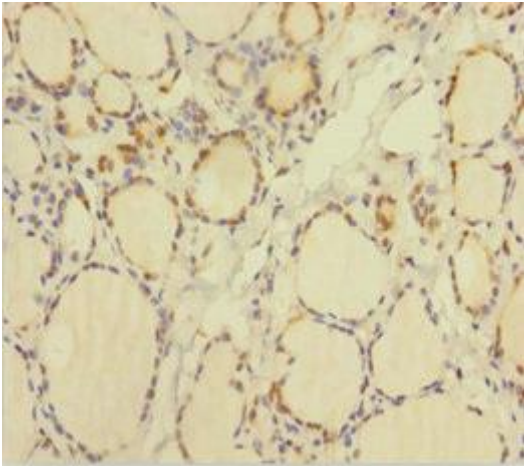
Immunogen:

Recombinant Human Thioredoxin-like protein 1 protein (2-289AA).

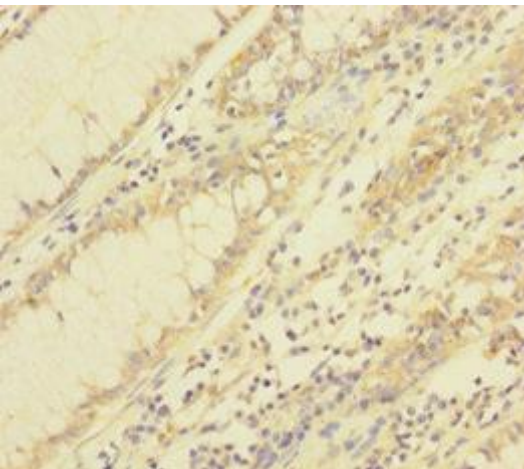
Storage:

Preservative: 0.03% Proclin 300. Constituents: 50% Glycerol, 0.01M PBS, PH 7.4

Product Images



Immunohistochemistry of paraffin-embedded human thyroid tissue using PACO30912 at dilution of 1:100.



Immunohistochemistry of paraffin-embedded human colon cancer using PACO30912 at dilution of 1:100.