

TUBAL3 Antibody



PACO30886

Product Information

Size:

50ug

Reactivity:

Human

Source:

Rabbit

Isotype:

IgG

Applications:

ELISA, IHC

Recommended dilutions:

ELISA:1:2000-1:10000, IHC:1:20-1:200

Protein Background:

Tubulin is the major constituent of microtubules. It binds two moles of GTP, one at an exchangeable site on the beta chain and one at a non-exchangeable site on the alpha chain.

Gene ID:

TUBAL3

Uniprot

A6NHL2

Synonyms:

Tubulin alpha chain-like 3, TUBAL3

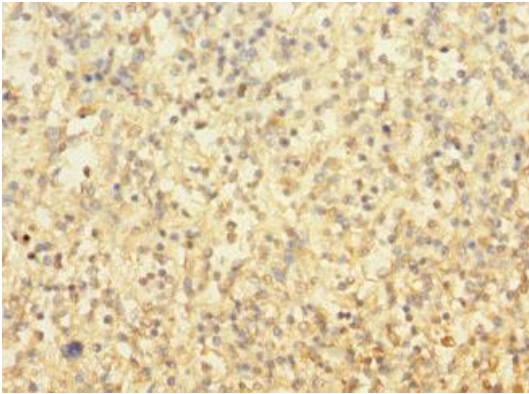
Immunogen:

Recombinant Human Tubulin α chain-like 3 protein (1-300AA).

Storage:

Preservative: 0.03% Proclin 300. Constituents: 50% Glycerol, 0.01M PBS, PH 7.4

Product Images



Immunohistochemistry of paraffin-embedded human spleen tissue using PACO30886 at dilution of 1:100.