

## Product Information

**Size:**

50ug

**Reactivity:**

Human

**Source:**

Rabbit

**Isotype:**

IgG

**Applications:**

ELISA, IF

**Recommended dilutions:**

ELISA:1:2000-1:10000, IF:1:50-1:200

**Protein Background:**

extracellular exosome, integral component of plasma membrane, plasma membrane, enzyme binding, establishment of protein localization to plasma membrane, positive regulation of Notch signaling pathway, protein maturation.

**Gene ID:**

TSPAN15

**Uniprot**

O95858

**Synonyms:**

Tetraspanin-15 (Tspan-15) (Tetraspan NET-7) (Transmembrane 4 superfamily member 15), TSPAN15, NET7 TM4SF15

**Immunogen:**

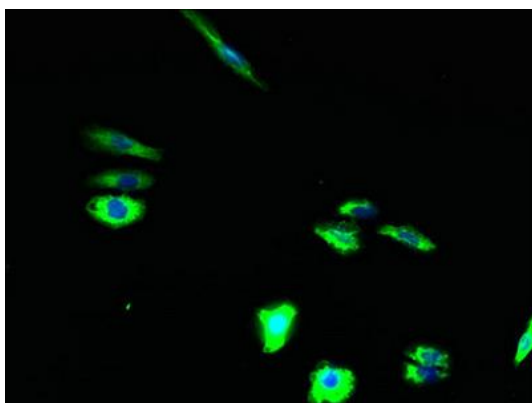
Recombinant Human Tetraspanin-15 protein (115-235AA).

**Storage:**

Preservative: 0.03% Proclin 300. Constituents: 50% Glycerol, 0.01M PBS, PH 7.4

## Product Images

---



Immunofluorescent analysis of HepG2 cells using PACO30846 at dilution of 1:100 and Alexa Fluor 488-conjugated AffiniPure Goat Anti-Rabbit IgG(H+L).