

PACO30826

---

## Product Information

**Size:**

50ug

**Reactivity:**

Human

**Source:**

Rabbit

**Isotype:**

IgG

**Applications:**

ELISA, WB, IHC

**Recommended dilutions:**

ELISA:1:2000-1:10000, WB:1:1000-1:5000,  
IHC:1:20-1:200

**Protein Background:**

Required for rRNA maturation and formation of the 60S ribosomal subunits. This protein binds 5S RNA.

**Gene ID:**

RPL5

**Uniprot**

P46777

**Synonyms:**

60S ribosomal protein L5 (Large ribosomal subunit protein uL18), RPL5

**Immunogen:**

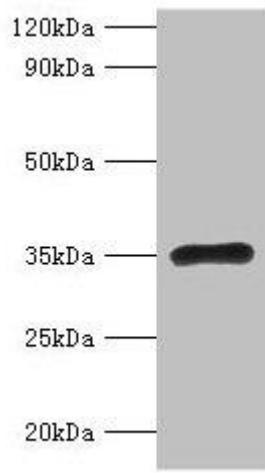
Recombinant Human 60S ribosomal protein L5 protein (2-297AA).

**Storage:**

Preservative: 0.03% Proclin 300. Constituents: 50% Glycerol, 0.01M PBS, PH 7.4

## Product Images

---



### Western blot

All lanes: RPL5 antibody at 2 $\mu$ g/ml + EC109 whole cell lysate

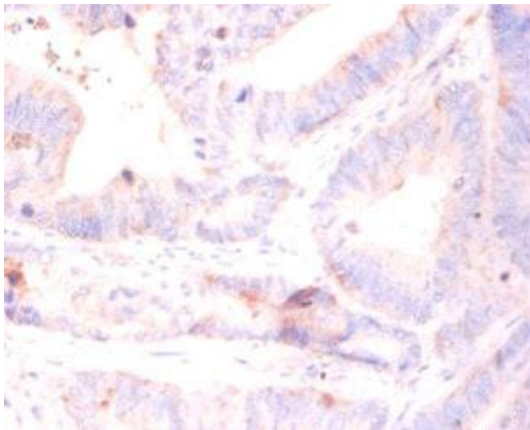
Secondary

Goat polyclonal to rabbit IgG at 1/15000 dilution

Predicted band size: 35 kDa

Observed band size: 35 kDa

.



Immunohistochemistry of paraffin-embedded human colon cancer using PACO30826 at dilution of 1:50.