

PACO30766

Product Information

Size:

50ug

Reactivity:

Human

Source:

Rabbit

Isotype:

IgG

Applications:

ELISA, WB, IF

Recommended dilutions:

ELISA:1:2000-1:10000, WB:1:1000-1:5000,
IF:1:50-1:200

Protein Background:

Could be involved in signal transduction.

Gene ID:

TPTE

Uniprot

P56180

Synonyms:

Putative tyrosine-protein phosphatase TPTE (EC 3.1.3.48) (Cancer/testis antigen 44) (CT44) (Transmembrane phosphatase with tensin homology) (Tumor antigen BJ-HCC-5), TPTE

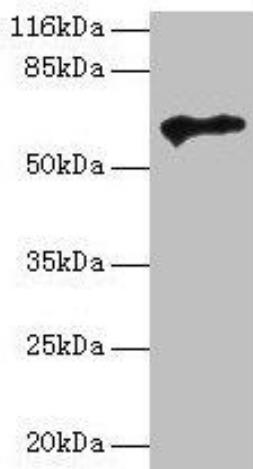
Immunogen:

Recombinant Human Putative tyrosine-protein phosphatase TPTE protein (175-380AA).

Storage:

Preservative: 0.03% Proclin 300. Constituents: 50% Glycerol, 0.01M PBS, PH 7.4

Product Images



Western blot

All lanes: TPTE antibody at 2 μ g/ml + HepG2 whole cell lysate

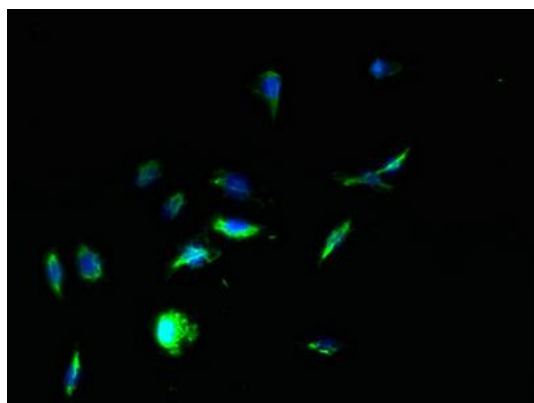
Secondary

Goat polyclonal to rabbit IgG at 1/10000 dilution

Predicted band size: 65, 63, 61, 50 kDa

Observed band size: 65 kDa

.



Immunofluorescent analysis of HepG2 cells using PACO30766 at dilution of 1:100 and Alexa Fluor 488-conjugated AffiniPure Goat Anti-Rabbit IgG(H+L).