

# TMEM82 Antibody



PACO30650

---

## Product Information

**Size:**

50ug

**Reactivity:**

Human

**Source:**

Rabbit

**Isotype:**

IgG

**Applications:**

ELISA, IHC, IF

**Recommended dilutions:**

ELISA:1:2000-1:10000, IHC:1:20-1:200,  
IF:1:50-1:200

**Protein Background:**

**Gene ID:**

TMEM82

**Uniprot**

A0PJX8

**Synonyms:**

Transmembrane protein 82, TMEM82

**Immunogen:**

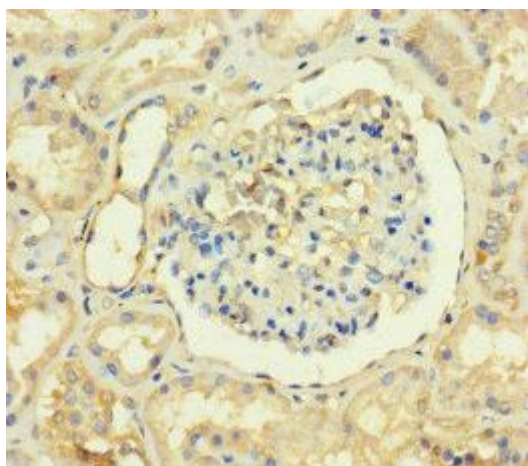
Recombinant Human Transmembrane protein 82 protein (168-202AA).

**Storage:**

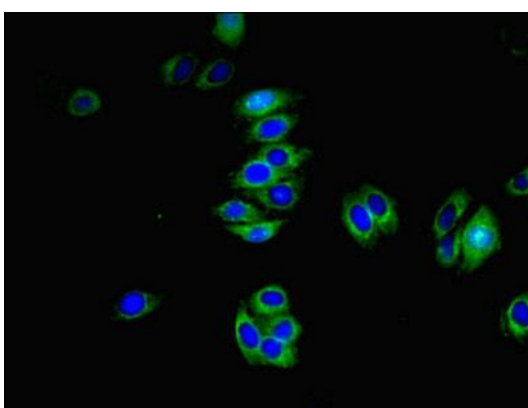
Preservative: 0.03% Proclin 300. Constituents: 50% Glycerol, 0.01M PBS, PH 7.4

## Product Images

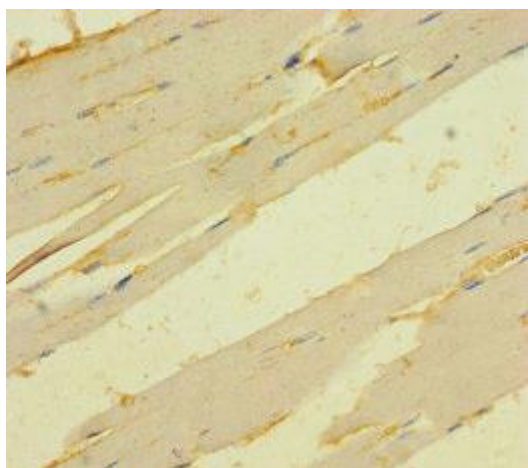
---



Immunohistochemistry of paraffin-embedded human kidney tissue using PACO30650 at dilution of 1:100.



Immunofluorescent analysis of HepG2 cells using PACO30650 at dilution of 1:100 and Alexa Fluor 488-conjugated AffiniPure Goat Anti-Rabbit IgG(H+L).



Immunohistochemistry of paraffin-embedded human skeletal muscle tissue using PACO30650 at dilution of 1:100.