

# TMEM68 Antibody



PACO30642

---

## Product Information

**Size:**

50ug

**Reactivity:**

Human, Mouse

**Source:**

Rabbit

**Isotype:**

IgG

**Applications:**

ELISA, WB, IF

**Recommended dilutions:**

ELISA:1:2000-1:10000, WB:1:1000-1:5000,  
IF:1:50-1:200

**Protein Background:****Gene ID:**

TMEM68

**Uniprot**

Q96MH6

**Synonyms:**

Transmembrane protein 68, TMEM68

**Immunogen:**

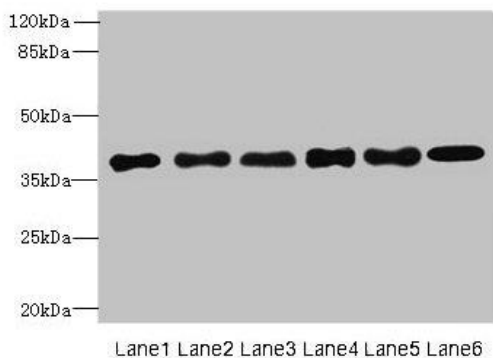
Recombinant Human Transmembrane protein 68 protein (74-114AA).

**Storage:**

Preservative: 0.03% Proclin 300. Constituents: 50% Glycerol, 0.01M PBS, PH 7.4

## Product Images

---



### Western blot

All lanes: TMEM68 antibody at 4 $\mu$ g/ml

Lane 1: Mouse thymus tissue

Lane 2: K562 whole cell lysate

Lane 3: U251 whole cell lysate

Lane 4: HepG2 whole cell lysate

Lane 5: MCF-7 whole cell lysate

Lane 6: Jurkat whole cell lysate

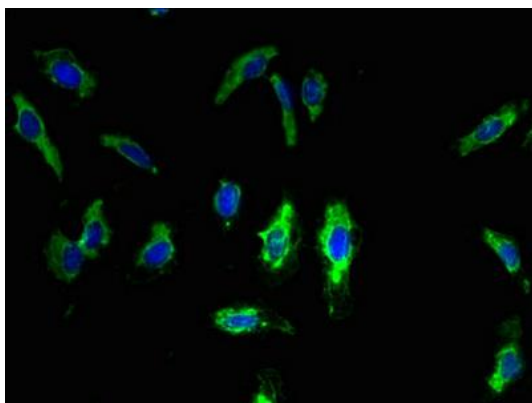
Secondary

Goat polyclonal to rabbit IgG at 1/10000 dilution

Predicted band size: 38, 30, 16 kDa

Observed band size: 38 kDa

.



Immunofluorescent analysis of HeLa cells using PACO30642 at dilution of 1:100 and Alexa Fluor 488-conjugated AffiniPure Goat Anti-Rabbit IgG(H+L).