

TMEM65 Antibody



PACO30638

Product Information

Size:

50ug

Reactivity:

Human, Mouse

Source:

Rabbit

Isotype:

IgG

Applications:

ELISA, WB, IHC, IF

Recommended dilutions:

ELISA:1:2000-1:10000, WB:1:500-1:2000,
IHC:1:20-1:200, IF:1:50-1:200

Protein Background:

Gene ID:

TMEM65

Uniprot

Q6PI78

Synonyms:

Transmembrane protein 65, TMEM65

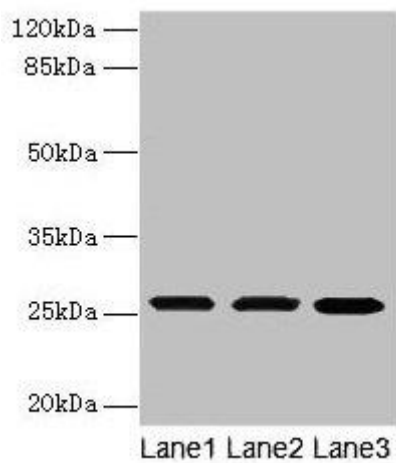
Immunogen:

Recombinant Human Transmembrane protein 65 protein (63-240AA).

Storage:

Preservative: 0.03% Proclin 300. Constituents: 50% Glycerol, 0.01M PBS, PH 7.4

Product Images



Western blot

All lanes: TMEM65 antibody at 1.3 μ g/ml

Lane 1: HeLa whole cell lysate

Lane 2: NIH/3T3 whole cell lysate

Lane 3: Mouse stomach tissue

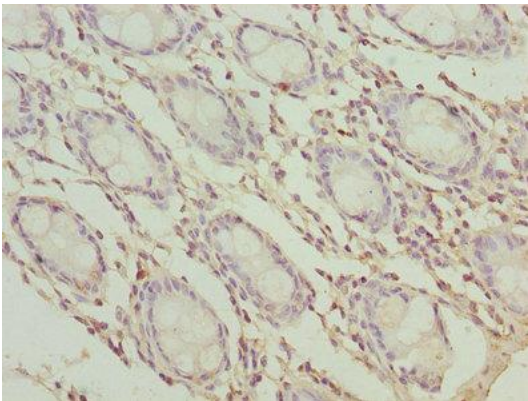
Secondary

Goat polyclonal to rabbit IgG at 1/10000 dilution

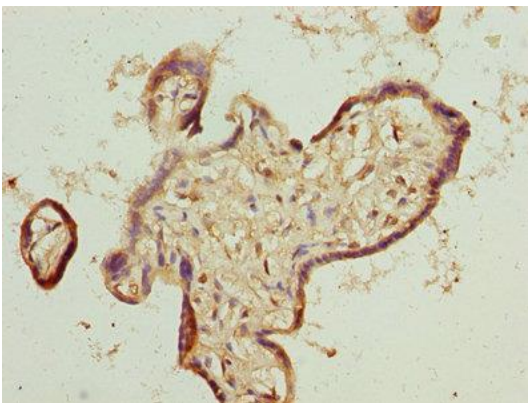
Predicted band size: 26 kDa

Observed band size: 26 kDa

.



Immunohistochemistry of paraffin-embedded human colon tissue using PACO30638 at dilution of 1:100.



Immunohistochemistry of paraffin-embedded human placenta tissue using PACO30638 at dilution of 1:100.