

# TMEM63A Antibody



PACO30634

---

## Product Information

**Size:**

50ug

**Reactivity:**

Human

**Source:**

Rabbit

**Isotype:**

IgG

**Applications:**

ELISA, IF

**Recommended dilutions:**

ELISA:1:2000-1:10000, IF:1:50-1:200

**Protein Background:**

Acts as an osmosensitive calcium-permeable cation channel.

**Gene ID:**

TMEM63A

**Uniprot**

O94886

**Synonyms:**

CSC1-like protein 1 (Transmembrane protein 63A), TMEM63A, KIAA0489 KIAA0792

**Immunogen:**

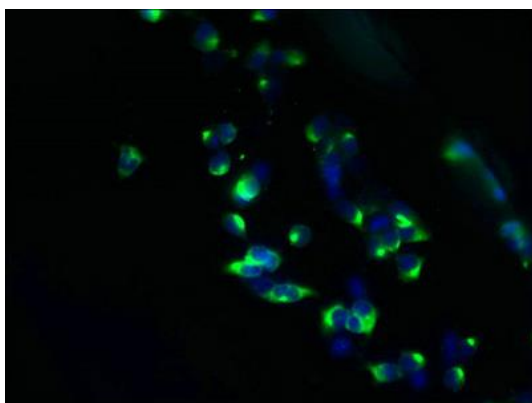
Recombinant Human CSC1-like protein 1 protein (212-420AA).

**Storage:**

Preservative: 0.03% Proclin 300. Constituents: 50% Glycerol, 0.01M PBS, PH 7.4

## Product Images

---



Immunofluorescent analysis of 293T cells using PACO30634 at dilution of 1:100 and Alexa Fluor 488-conjugated AffiniPure Goat Anti-Rabbit IgG(H+L).