

PACO30622

Product Information

Size:

50ug

Reactivity:

Human

Source:

Rabbit

Isotype:

IgG

Applications:

ELISA, IHC

Recommended dilutions:

ELISA:1:2000-1:10000, IHC:1:20-1:200

Protein Background:

The L3 protein is a component of the large subunit of cytoplasmic ribosomes.

Gene ID:

RPL3

Uniprot

P39023

Synonyms:

60S ribosomal protein L3 (HIV-1 TAR RNA-binding protein B) (TARBP-B) (Large ribosomal subunit protein uL3), RPL3

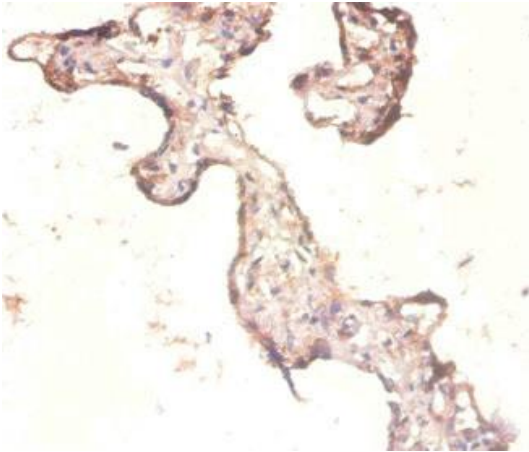
Immunogen:

Recombinant Human 60S ribosomal protein L3 protein (2-247AA).

Storage:

Preservative: 0.03% Proclin 300. Constituents: 50% Glycerol, 0.01M PBS, PH 7.4

Product Images



Immunohistochemistry of paraffin-embedded human placenta tissue using PACO30622 at dilution of 1:100.