

TMEM41A Antibody



PACO30594

Product Information

Size:

50ug

Reactivity:

Human, Mouse

Source:

Rabbit

Isotype:

IgG

Applications:

ELISA, WB, IHC, IF

Recommended dilutions:

ELISA:1:2000-1:10000, WB:1:500-1:2000,
IHC:1:20-1:200, IF:1:50-1:200

Protein Background:**Gene ID:**

TMEM41A

Uniprot

Q96HV5

Synonyms:

Transmembrane protein 41A, TMEM41A

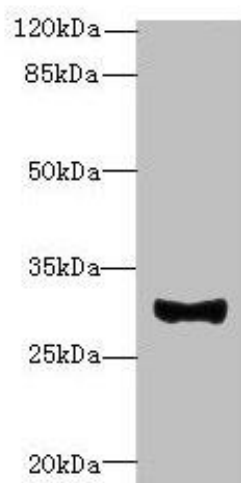
Immunogen:

Recombinant Human Transmembrane protein 41A protein (18-66AA).

Storage:

Preservative: 0.03% Proclin 300. Constituents: 50% Glycerol, 0.01M PBS, PH 7.4

Product Images



Western blot

All lanes: TMEM41A antibody at 0.5 μ g/ml + Mouse liver tissue

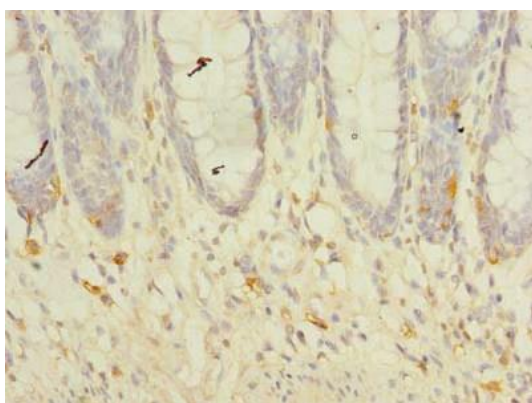
Secondary

Goat polyclonal to rabbit IgG at 1/10000 dilution

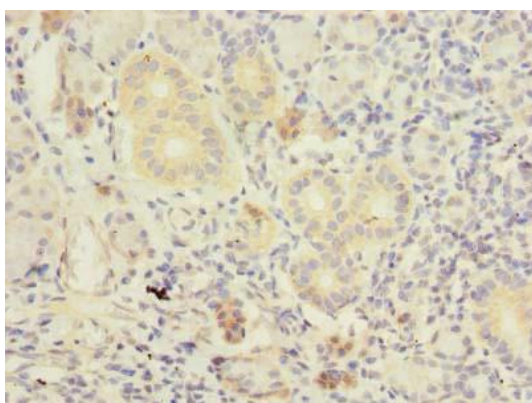
Predicted band size: 30 kDa

Observed band size: 30 kDa

.



Immunohistochemistry of paraffin-embedded human colon tissue using PACO30594 at dilution of 1:100.



Immunohistochemistry of paraffin-embedded human pancreatic tissue using PACO30594 at dilution of 1:100.