

# TMEM222 Antibody



PACO30574

---

## Product Information

**Size:**

50ug

**Reactivity:**

Human

**Source:**

Rabbit

**Isotype:**

IgG

**Applications:**

ELISA, WB, IHC, IF

**Recommended dilutions:**

ELISA:1:2000-1:10000, WB:1:500-1:2000,  
IHC:1:20-1:200, IF:1:50-1:200

**Protein Background:****Gene ID:**

TMEM222

**Uniprot**

Q9H0R3

**Synonyms:**

Transmembrane protein 222, TMEM222, C1orf160

**Immunogen:**

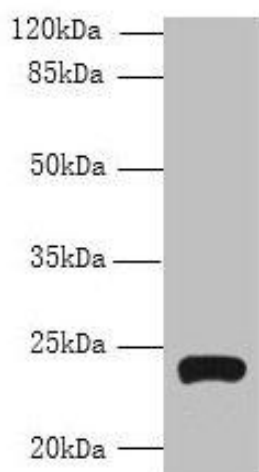
Recombinant Human Transmembrane protein 222 protein (77-164AA).

**Storage:**

Preservative: 0.03% Proclin 300. Constituents: 50% Glycerol, 0.01M PBS, PH 7.4

## Product Images

---



### Western blot

All lanes: TMEM222 antibody at 4 $\mu$ g/ml + HepG2 whole cell lysate

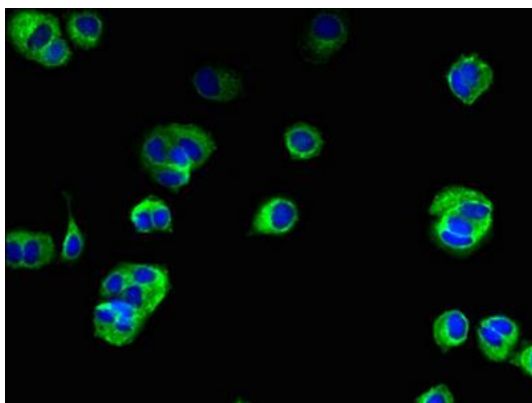
Secondary

Goat polyclonal to rabbit IgG at 1/10000 dilution

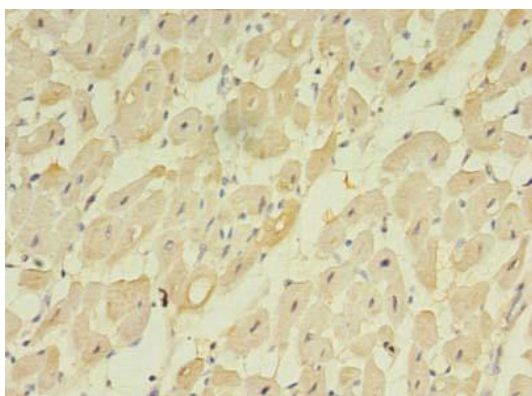
Predicted band size: 24, 13 kDa

Observed band size: 24 kDa

.



Immunofluorescent analysis of MCF-7 cells using PACO30574 at dilution of 1:100 and Alexa Fluor 488-conjugated AffiniPure Goat Anti-Rabbit IgG(H+L).



Immunohistochemistry of paraffin-embedded human heart tissue using PACO30574 at dilution of 1:100.