

# TMEM14B Antibody



PACO30490

---

## Product Information

**Size:**

50ug

**Reactivity:**

Human

**Source:**

Rabbit

**Isotype:**

IgG

**Applications:**

ELISA, WB, IHC, IF

**Recommended dilutions:**

ELISA:1:2000-1:10000, WB:1:500-1:2000,  
IHC:1:20-1:200, IF:1:50-1:200

**Protein Background:**

**Gene ID:**

TMEM14B

**Uniprot**

Q9NUH8

**Synonyms:**

Transmembrane protein 14B, TMEM14B

**Immunogen:**

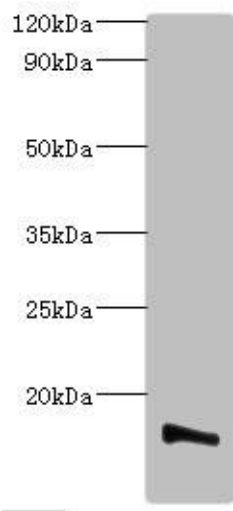
Recombinant Human Transmembrane protein 14B protein (1-114AA).

**Storage:**

Preservative: 0.03% Proclin 300. Constituents: 50% Glycerol, 0.01M PBS, PH 7.4

## Product Images

---



### Western blot

All lanes: Transmembrane protein 14B antibody at 2µg/ml + K562 whole cell lysate

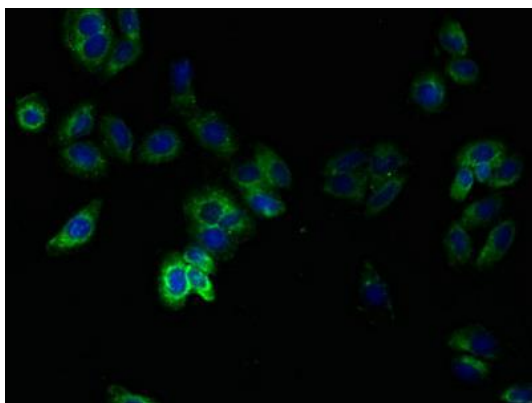
Secondary

Goat polyclonal to rabbit IgG at 1/10000 dilution

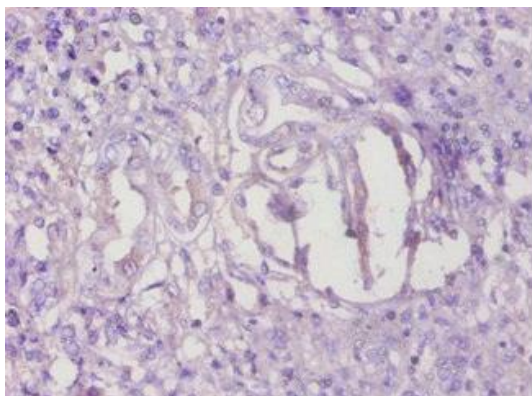
Predicted band size: 13, 9 kDa

Observed band size: 13 kDa

.



Immunofluorescent analysis of HepG2 cells using PACO30490 at dilution of 1:100 and Alexa Fluor 488-conjugated AffiniPure Goat Anti-Rabbit IgG(H+L).



Immunohistochemistry of paraffin-embedded human kidney tissue using PACO30490 at dilution of 1:100.