

# RPLP1 Antibody



PACO30450

---

## Product Information

**Size:**

50ug

**Reactivity:**

Human

**Source:**

Rabbit

**Isotype:**

IgG

**Applications:**

ELISA, WB, IHC, IF

**Recommended dilutions:**

ELISA:1:2000-1:10000, WB:1:500-1:2000,  
IHC:1:20-1:200, IF:1:50-1:200

**Protein Background:**

Plays an important role in the elongation step of protein synthesis.

**Gene ID:**

RPLP1

**Uniprot**

P05386

**Synonyms:**

60S acid, c ribosomal protein P1 (Large ribosomal subunit protein P1), RPLP1, RRP1

**Immunogen:**

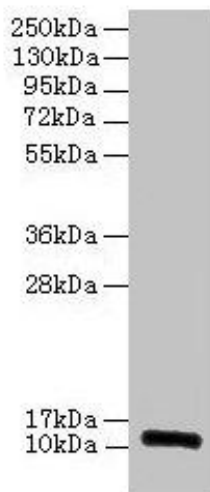
Recombinant Human 60S acid, c ribosomal protein P1 protein (2-114AA).

**Storage:**

Preservative: 0.03% Proclin 300. Constituents: 50% Glycerol, 0.01M PBS, PH 7.4

## Product Images

---



### Western blot

All lanes: RPLP1 antibody at 2 $\mu$ g/ml

Lane 1: EC109 whole cell lysate

Lane 2: 293T whole cell lysate

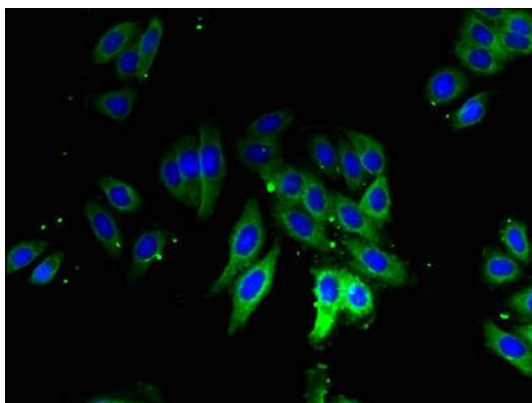
Secondary

Goat polyclonal to rabbit IgG at 1/15000 dilution

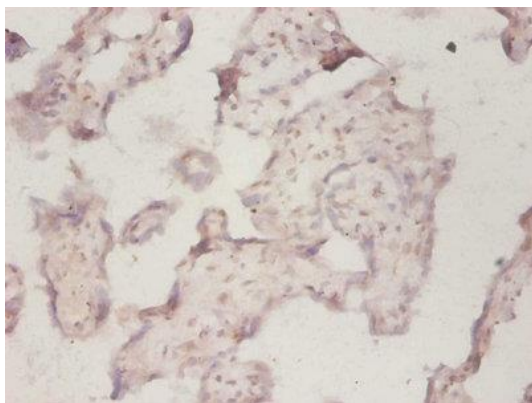
Predicted band size: 12, 9 kDa

Observed band size: 12 kDa

.



Immunofluorescent analysis of HepG2 cells using PACO30450 at dilution of 1:100 and Alexa Fluor 488-conjugated AffiniPure Goat Anti-Rabbit IgG(H+L).



Immunohistochemistry of paraffin-embedded human placenta tissue using PACO30450 at dilution of 1:50.