

TMCC1 Antibody



PACO30446

Product Information

Size:

50ug

Reactivity:

Human, Mouse

Source:

Rabbit

Isotype:

IgG

Applications:

ELISA, WB, IHC, IF

Recommended dilutions:

ELISA:1:2000-1:10000, WB:1:500-1:2000,
IHC:1:20-1:200, IF:1:50-1:200

Protein Background:**Gene ID:**

TMCC1

Uniprot

O94876

Synonyms:

Transmembrane and coiled-coil domains protein 1, TMCC1, KIAA0779

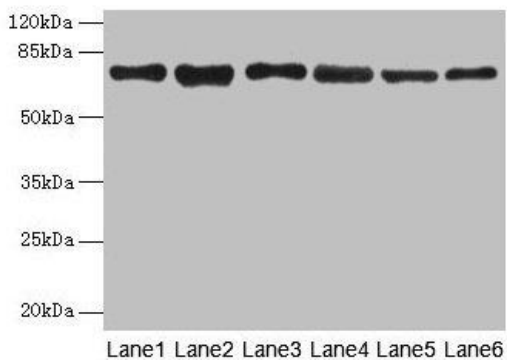
Immunogen:

Recombinant Human Transmembrane and coiled-coil domains protein 1 protein (51-300AA).

Storage:

Preservative: 0.03% Proclin 300. Constituents: 50% Glycerol, 0.01M PBS, PH 7.4

Product Images



Western blot

All lanes: TMCC1 antibody at 1 μ g/ml

Lane 1: MCF-7 whole cell lysate

Lane 2: Mouse liver tissue

Lane 3: Mouse kidney tissue

Lane 4: HL60 whole cell lysate

Lane 5: K562 whole cell lysate

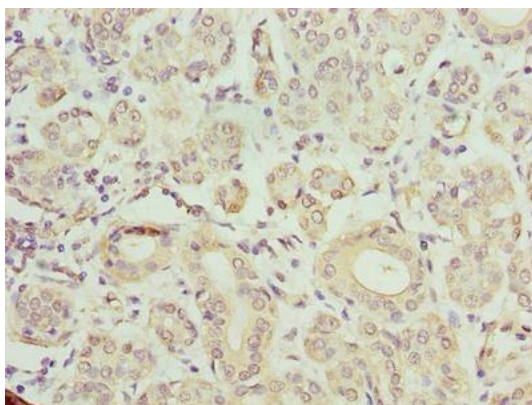
Lane 6: U937 whole cell lysate

Secondary

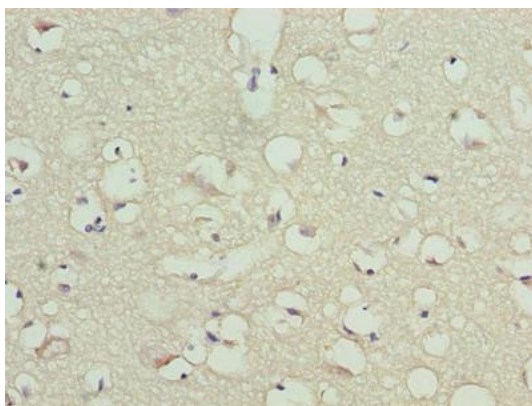
Goat polyclonal to rabbit IgG at 1/10000 dilution

Predicted band size: 73, 54 kDa

Observed band size: 73 kDa



Immunohistochemistry of paraffin-embedded human salivary gland tissue using PACO30446 at dilution of 1:100.



Immunohistochemistry of paraffin-embedded human brain tissue using PACO30446 at dilution of 1:100.