

TLR6 Antibody



PACO30426

Product Information

Size:

50ug

Reactivity:

Human

Source:

Rabbit

Isotype:

IgG

Applications:

ELISA, WB, IHC, IF

Recommended dilutions:

ELISA:1:2000-1:10000, WB:1:500-1:2000,
IHC:1:20-1:200, IF:1:50-1:200

Protein Background:

Gene ID:

TLR6

Uniprot

Q9Y2C9

Synonyms:

Toll-like receptor 6 (CD antigen CD286), TLR6

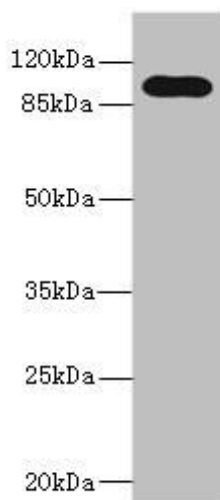
Immunogen:

Recombinant Human Toll-like receptor 6 protein (32-586AA).

Storage:

Preservative: 0.03% Proclin 300. Constituents: 50% Glycerol, 0.01M PBS, PH 7.4

Product Images



Western blot

All lanes: TLR6 antibody at 5 μ g/ml + Jurkat whole cell lysate

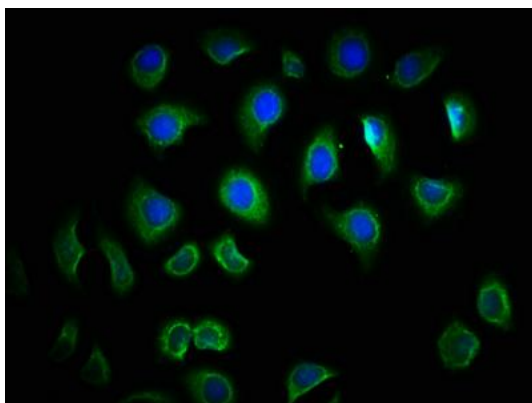
Secondary

Goat polyclonal to rabbit IgG at 1/10000 dilution

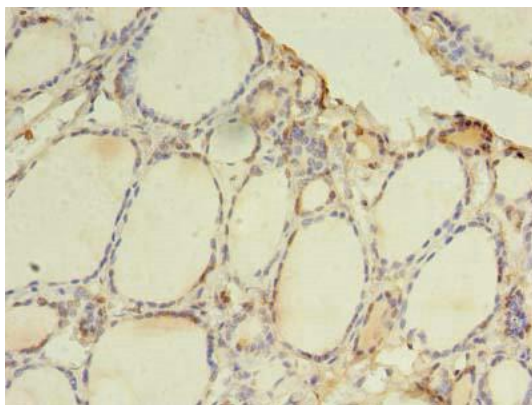
Predicted band size: 92, 56 kDa

Observed band size: 92 kDa

.



Immunofluorescence staining of A549 cells with PACO30426 at 1:166, counter-stained with DAPI. The cells were fixed in 4% formaldehyde, permeabilized using 0.2% Triton X-100 and blocked in 10% normal Goat Serum. The cells were then incubated with the antibody overnight at 4°C. The secondary antibody was Alexa Fluor 488-conjugated AffiniPure Goat Anti-Rabbit IgG(H+L).



Immunohistochemistry of paraffin-embedded human thyroid tissue using PACO30426 at dilution of 1:100.