

TK1 Antibody



PACO30414

Product Information

Size:

50ug

Reactivity:

Human

Source:

Rabbit

Isotype:

IgG

Applications:

ELISA, WB, IHC

Recommended dilutions:

ELISA:1:2000-1:10000, WB:1:500-1:5000,
IHC:1:20-1:200

Protein Background:**Gene ID:**

TK1

Uniprot

P04183

Synonyms:

Thymidine kinase, cytosolic (EC 2.7.1.21), TK1

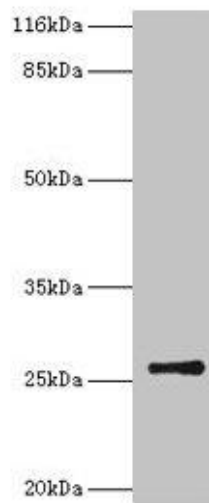
Immunogen:

Recombinant Human Thymidine kinase, cytosolic protein (2-234AA).

Storage:

Preservative: 0.03% Proclin 300. Constituents: 50% Glycerol, 0.01M PBS, PH 7.4

Product Images



Western blot

All lanes: TK1 antibody at 2 μ g/ml + CEM whole cell lysate

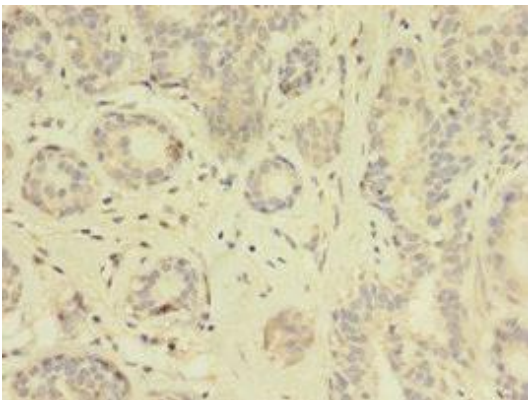
Secondary

Goat polyclonal to rabbit IgG at 1/10000 dilution

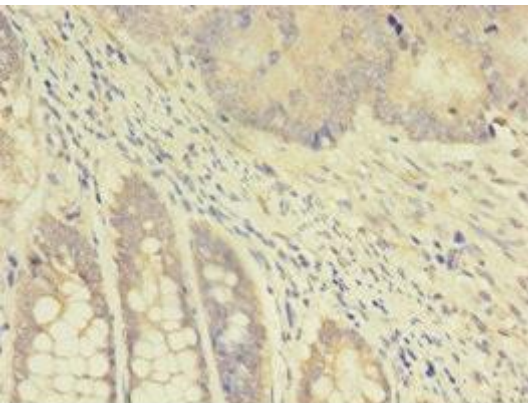
Predicted band size: 26 kDa

Observed band size: 26 kDa

.



Immunohistochemistry of paraffin-embedded human breast cancer using PACO30414 at dilution of 1:100.



Immunohistochemistry of paraffin-embedded human colon cancer using PACO30414 at dilution of 1:100.