

# TET3 Antibody



PACO30326

---

## Product Information

**Size:**

50ug

**Reactivity:**

Human

**Source:**

Rabbit

**Isotype:**

IgG

**Applications:**

ELISA, IHC

**Recommended dilutions:**

ELISA:1:2000-1:10000, IHC:1:20-1:200

**Protein Background:****Gene ID:**

TET3

**Uniprot**

O43151

**Synonyms:**

Methylcytosine dioxygenase TET3 (EC 1.14.11. n2), TET3, KIAA0401

**Immunogen:**

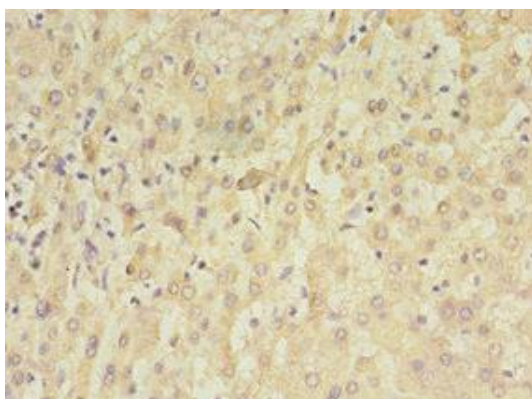
Recombinant Human Methylcytosine dioxygenase TET3 protein (72-335AA).

**Storage:**

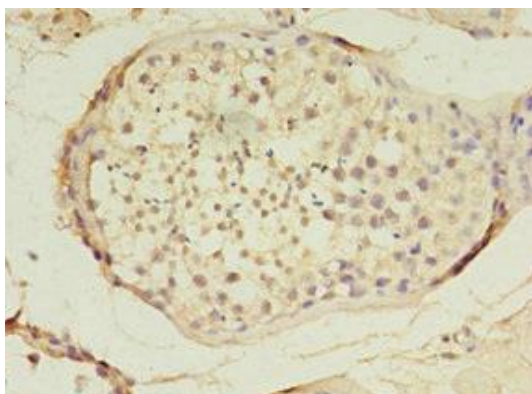
Preservative: 0.03% Proclin 300. Constituents: 50% Glycerol, 0.01M PBS, PH 7.4

## Product Images

---



Immunohistochemistry of paraffin-embedded human liver tissue using PACO30326 at dilution of 1:100.



Immunohistochemistry of paraffin-embedded human testis tissue using PACO30326 at dilution of 1:100.