

PACO30286

---

## Product Information

**Size:**

50ug

**Reactivity:**

Human

**Source:**

Rabbit

**Isotype:**

IgG

**Applications:**

ELISA, WB, IHC

**Recommended dilutions:**

ELISA:1:2000-1:10000, WB:1:500-1:5000,  
IHC:1:20-1:200

**Protein Background:**

Tubulin-folding protein; involved in the final step of the tubulin folding pathway.

**Gene ID:**

TBCC

**Uniprot**

Q15814

**Synonyms:**

Tubulin-specific chaperone C (Tubulin-folding cofactor C) (CFC), TBCC

**Immunogen:**

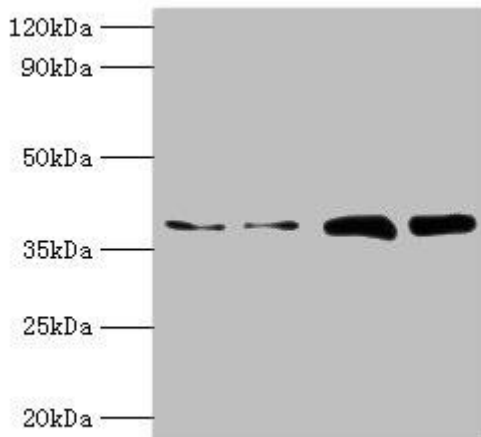
Recombinant Human Tubulin-specific chaperone C protein (2-346AA).

**Storage:**

Preservative: 0.03% Proclin 300. Constituents: 50% Glycerol, 0.01M PBS, PH 7.4

## Product Images

---



### Western blot

All lanes: TBCC antibody at 2 $\mu$ g/ml

Lane 1: Hela whole cell lysate

Lane 2: HepG2 whole cell lysate

Lane 3: A549 whole cell lysate

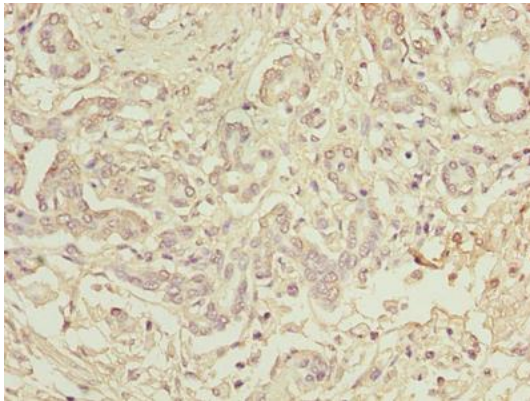
Lane 4: MCF-7 whole cell lysate

Secondary

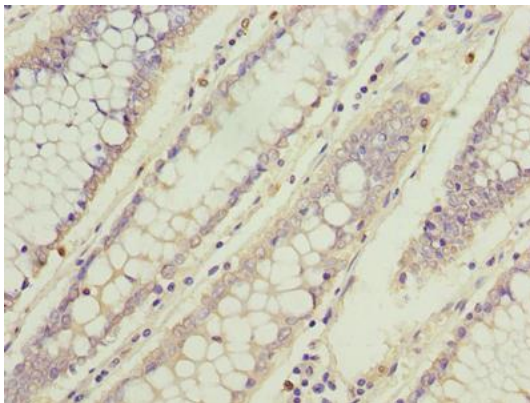
Goat polyclonal to rabbit IgG at 1/10000 dilution

Predicted band size: 40 kDa

Observed band size: 40 kDa



Immunohistochemistry of paraffin-embedded human pancreatic cancer using PACO30286 at dilution of 1:100.



Immunohistochemistry of paraffin-embedded human colon cancer using PACO30286 at dilution of 1:100.