

PACO30222

Product Information

Size:

50ug

Reactivity:

Human, Rat

Source:

Rabbit

Isotype:

IgG

Applications:

ELISA, WB, IHC

Recommended dilutions:

ELISA:1:2000-1:10000, WB:1:1000-1:5000,
IHC:1:20-1:200

Protein Background:

Sulfite oxidase is a homodimeric protein localized to the intermembrane space of mitochondria. Each subunit contains a heme domain and a molybdopterin-binding domain. The enzyme catalyzes the oxidation of sulfite to sulfate, the final reaction in the oxidative degradation of the sulfur amino acid, cysteine and methionine. Sulfite oxidase deficiency results in neurological abnormalities which are often fatal at an early age. Alternative splicing results in multiple transcript variants encoding identical proteins.

Gene ID:

SUOX

Uniprot

P51687

Synonyms:

Sulfite oxidase, mitochondrial (EC 1.8.3.1), SUOX

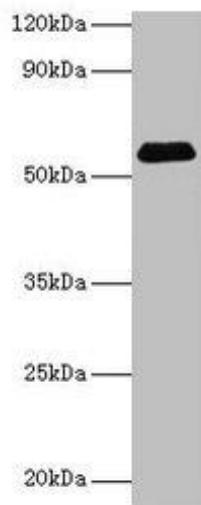
Immunogen:

Recombinant Human Sulfite oxidase, mitochondrial protein (80-545AA).

Storage:

Preservative: 0.03% Proclin 300. Constituents: 50% Glycerol, 0.01M PBS, PH 7.4

Product Images



Western blot

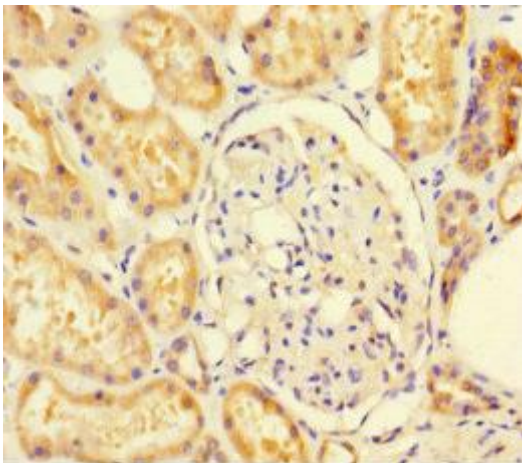
All lanes: SUOX antibody at 2 μ g/ml + Rat liver tissue

Secondary

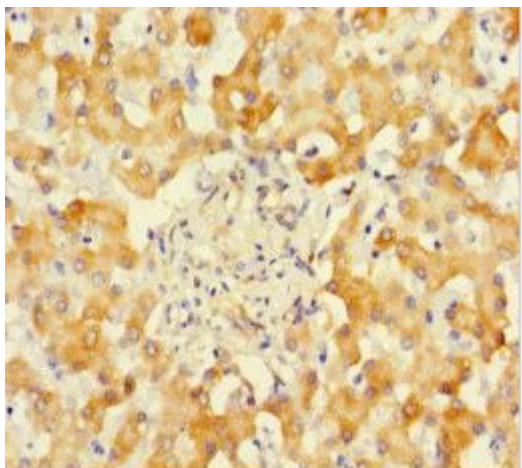
Goat polyclonal to rabbit IgG at 1/15000 dilution

Predicted band size: 61 kDa

Observed band size: 61 kDa



Immunohistochemistry of paraffin-embedded human kidney tissue using PACO30222 at dilution of 1:100.



Immunohistochemistry of paraffin-embedded human liver tissue using PACO30222 at dilution of 1:100.