

PACO30218

Product Information

Size:

50ug

Reactivity:

Human, Mouse

Source:

Rabbit

Isotype:

IgG

Applications:

ELISA, WB, IHC

Recommended dilutions:

ELISA:1:2000-1:10000, WB:1:500-1:1000,
IHC:1:20-1:200

Protein Background:

Sulfotransferase that utilizes 3'-phospho-5'-adenylyl sulfate (PAPS) as sulfonate donor to catalyze the sulfate conjugation of many hormones, neurotransmitters, drugs and xenobiotic compounds. Sulfonation increases the water solubility of most compounds, and therefore their renal excretion, but it can also result in bioactivation to form active metabolites. Sulfates dopamine, small phenols such as 1-naphthol and p-nitrophenol and thyroid hormones, including 3,3'-diiodothyronine, triiodothyronine, reverse triiodothyronine and thyroxine.

Gene ID:

SULT1B1

Uniprot

O43704

Synonyms:

Sulfotransferase family cytosolic 1B member 1 (ST1B1) (Sulfotransferase 1B1) (EC 2.8.2. -) (Sulfotransferase 1B2) (ST1B2) (Thyroid hormone sulfotransferase), SULT1B1, ST1B2, SULT1B2

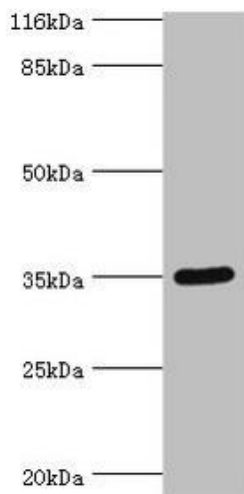
Immunogen:

Recombinant Human Sulfotransferase family cytosolic 1B member 1 protein (1-271AA).

Storage:

Preservative: 0.03% Proclin 300. Constituents: 50% Glycerol, 0.01M PBS, PH 7.4

Product Images



Western blot

All lanes: SULT1B1 antibody at 24 μ g/ml + Mouse small intestine tissue

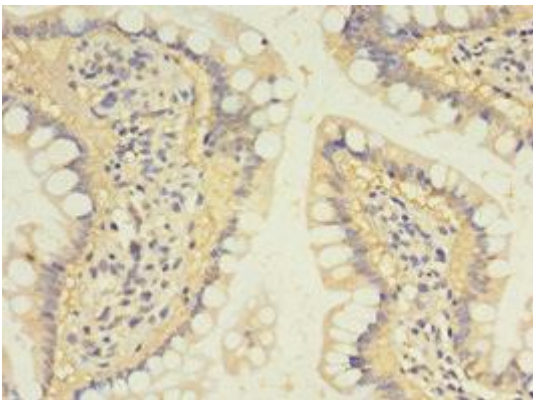
Secondary

Goat polyclonal to rabbit IgG at 1/10000 dilution

Predicted band size: 35 kDa

Observed band size: 35 kDa

.



Immunohistochemistry of paraffin-embedded human small intestine tissue using PACO30218 at dilution of 1:100.