

SUCNR1 Antibody



PACO30214

Product Information

Size:

50ug

Reactivity:

Human

Source:

Rabbit

Isotype:

IgG

Applications:

ELISA, WB, IHC, IF

Recommended dilutions:

ELISA:1:2000-1:10000, WB:1:1000-1:5000,
IHC:1:20-1:200, IF:1:50-1:200

Protein Background:

Receptor for succinate.

Gene ID:

SUCNR1

Uniprot

Q9BXA5

Synonyms:

Succinate receptor 1 (G-protein coupled receptor 91) (P2Y purinoceptor 1-like),
SUCNR1, GPR91

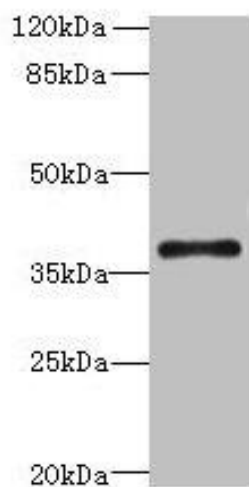
Immunogen:

Recombinant Human Succinate receptor 1 protein (303-334AA).

Storage:

Preservative: 0.03% Proclin 300. Constituents: 50% Glycerol, 0.01M PBS, PH 7.4

Product Images



Western blot

All lanes: SUCNR1 antibody at 6 μ g/ml + HeLa whole cell lysate

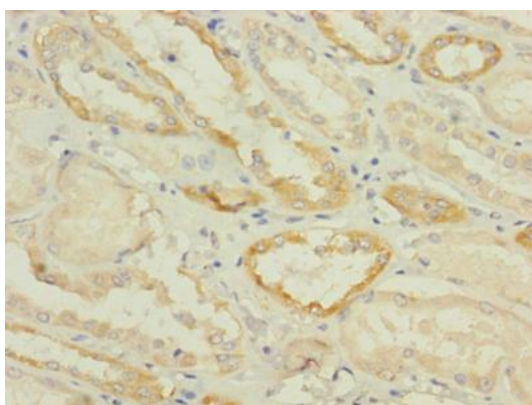
Secondary

Goat polyclonal to rabbit IgG at 1/10000 dilution

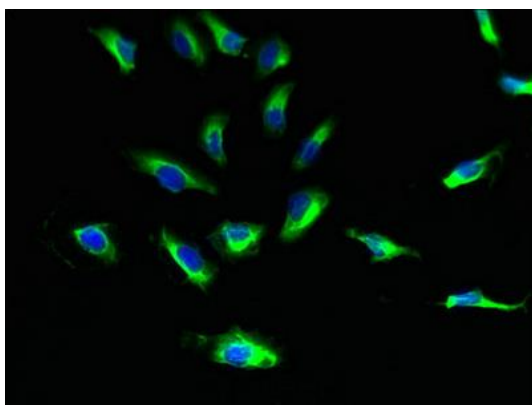
Predicted band size: 39 kDa

Observed band size: 39 kDa

.



Immunohistochemistry of paraffin-embedded human kidney tissue using PACO30214 at dilution of 1:100.



Immunofluorescent analysis of HeLa cells using PACO30214 at dilution of 1:100 and Alexa Fluor 488-conjugated AffiniPure Goat Anti-Rabbit IgG(H+L).