

Product Information

Size:

50ug

Reactivity:

Human

Source:

Rabbit

Isotype:

IgG

Applications:

ELISA, IHC

Recommended dilutions:

ELISA:1:2000-1:10000, IHC:1:20-1:200

Protein Background:

Oxidant stress-activated serine/threonine kinase that may play a role in the response to environmental stress. Targets to the Golgi apparatus where it appears to regulate protein transport events, cell adhesion, and polarity complexes important for cell migration.

Gene ID:

STK25

Uniprot

O00506

Synonyms:

Serine/threonine-protein kinase 25 (EC 2.7.11.1) (Ste20-like kinase) (Sterile 20/oxidant stress-response kinase 1) (SOK-1) (Ste20/oxidant stress response kinase 1), STK25, SOK1 YSK1

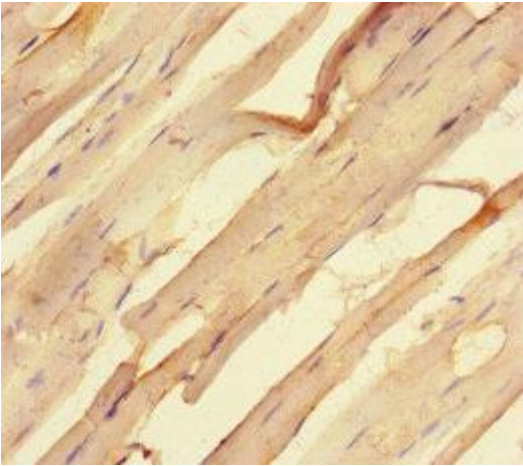
Immunogen:

Recombinant Human Serine/threonine-protein kinase 25 protein (1-426AA).

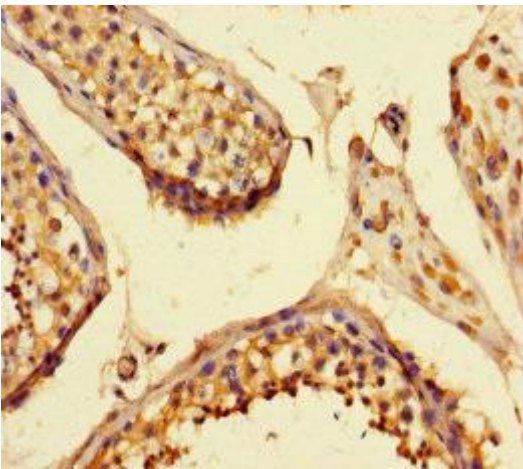
Storage:

Preservative: 0.03% Proclin 300. Constituents: 50% Glycerol, 0.01M PBS, PH 7.4

Product Images



Immunohistochemistry of paraffin-embedded human skeletal muscle tissue using PACO30182 at dilution of 1:100.



Immunohistochemistry of paraffin-embedded human testis tissue using PACO30182 at dilution of 1:100.