

# ITPRID2 Antibody



PACO30148

---

## Product Information

**Size:**

50ug

**Reactivity:**

Human

**Source:**

Rabbit

**Isotype:**

IgG

**Applications:**

ELISA, IHC

**Recommended dilutions:**

ELISA:1:2000-1:10000, IHC:1:20-1:200

**Protein Background:**

**Gene ID:**

ITPRID2

**Uniprot**

P28290

**Synonyms:**

Protein ITPRID2 (Cleavage signal-1 protein) (CS-1) (ITPR-interacting domain-containing protein 2) (Ki-ras-induced actin-interacting protein) (Sperm-specific antigen 2), ITPRID2, CS1 KIAA1927 KRAP SSFA2

**Immunogen:**

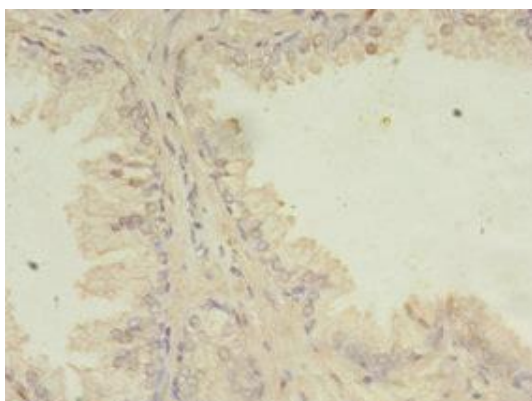
Recombinant Human Protein ITPRID2 protein (1-267AA).

**Storage:**

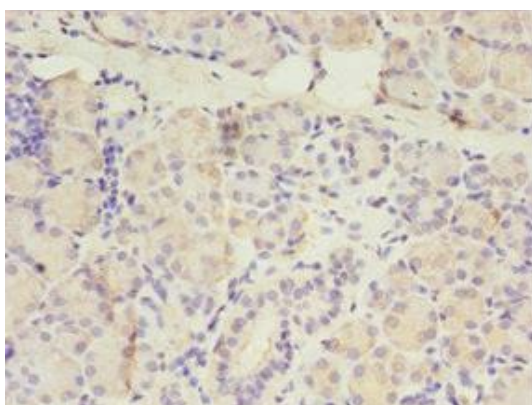
Preservative: 0.03% Proclin 300. Constituents: 50% Glycerol, 0.01M PBS, PH 7.4

## Product Images

---



Immunohistochemistry of paraffin-embedded human prostate cancer using PACO30148 at dilution of 1:100.



Immunohistochemistry of paraffin-embedded human pancreatic tissue using PACO30148 at dilution of 1:100.