

PACO30144

Product Information

Size:

50ug

Reactivity:

Human, Mouse

Source:

Rabbit

Isotype:

IgG

Applications:

ELISA, WB

Recommended dilutions:

ELISA:1:2000-1:10000, WB:1:1000-1:5000

Protein Background:

Binds to the 3' poly(U) terminus of nascent RNA polymerase III transcripts, protecting them from exonuclease digestion and facilitating their folding and maturation.

Gene ID:

SSB

Uniprot

P05455

Synonyms:

Lupus La protein (La autoantigen) (La ribonucleoprotein) (Sjogren syndrome type B antigen) (SS-B), SSB

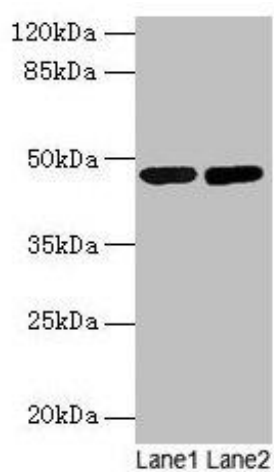
Immunogen:

Recombinant Human Lupus La protein (1-408AA).

Storage:

Preservative: 0.03% Proclin 300. Constituents: 50% Glycerol, 0.01M PBS, PH 7.4

Product Images



Western blot

All lanes: SSB antibody at 2 μ g/ml

Lane 1: Mouse liver tissue

Lane 2: Mouse brain tissue

Secondary

Goat polyclonal to rabbit IgG at 1/10000 dilution

Predicted band size: 47 kDa

Observed band size: 47 kDa

.