

PACO30100

Product Information

Size:

50ug

Reactivity:

Human, Mouse

Source:

Rabbit

Isotype:

IgG

Applications:

ELISA, WB, IHC

Recommended dilutions:

ELISA:1:2000-1:10000, WB:1:500-1:2000,
IHC:1:20-1:200

Protein Background:

Component of the microsomal signal peptidase complex which removes signal peptides from nascent proteins as they are translocated into the lumen of the endoplasmic reticulum.

Gene ID:

SPCS3

Uniprot

P61009

Synonyms:

Signal peptidase complex subunit 3 (EC 3.4. -. -) (Microsomal signal peptidase 22/23 kDa subunit) (SPC22/23) (SPase 22/23 kDa subunit), SPCS3, SPC22

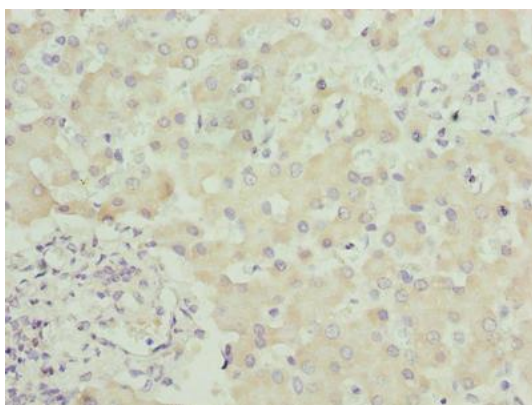
Immunogen:

Recombinant Human Signal peptidase complex subunit 3 protein (33-180AA).

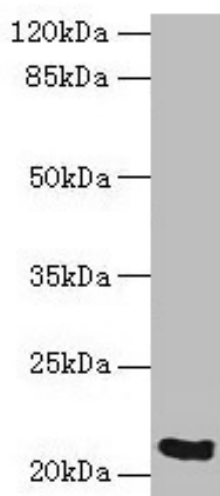
Storage:

Preservative: 0.03% Proclin 300. Constituents: 50% Glycerol, 0.01M PBS, PH 7.4

Product Images



Immunohistochemistry of paraffin-embedded human liver tissue using PACO30100 at dilution of 1:100.



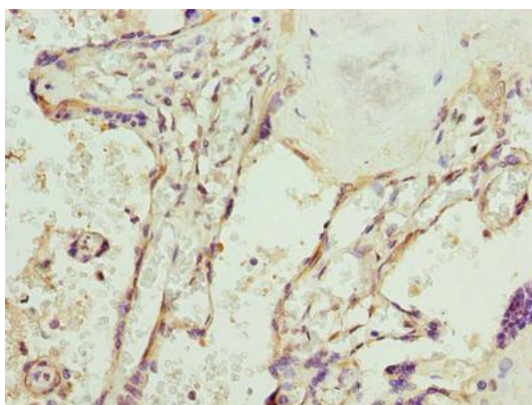
Western blot

All lanes: SPCS3 antibody at 0.1 μ g/ml + Mouse kidney tissue
Secondary

Goat polyclonal to rabbit at 1/10000 dilution

Predicted band size: 21 kDa

Observed band size: 21 kDa



Immunohistochemistry of paraffin-embedded human placenta tissue using PACO30100 at dilution of 1:100.