

SLC35B1 Antibody



PACO29956

Product Information

Size:

50ug

Reactivity:

Human

Source:

Rabbit

Isotype:

IgG

Applications:

ELISA, WB, IF

Recommended dilutions:

ELISA:1:2000-1:10000, WB:1:1000-1:5000,
IF:1:50-1:200

Protein Background:

Probable sugar transporter.

Gene ID:

SLC35B1

Uniprot

P78383

Synonyms:

Solute carrier family 35 member B1 (UDP-galactose transporter-related protein 1) (UGTrel1) (hUGTrel1), SLC35B1, UGTREL1

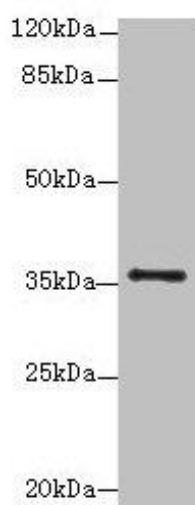
Immunogen:

Recombinant Human Solute carrier family 35 member B1 protein (106-135AA).

Storage:

Preservative: 0.03% Proclin 300. Constituents: 50% Glycerol, 0.01M PBS, PH 7.4

Product Images



Western blot

All lanes: SLC35B1 antibody at 4 μ g/ml + HL60 whole cell lysate

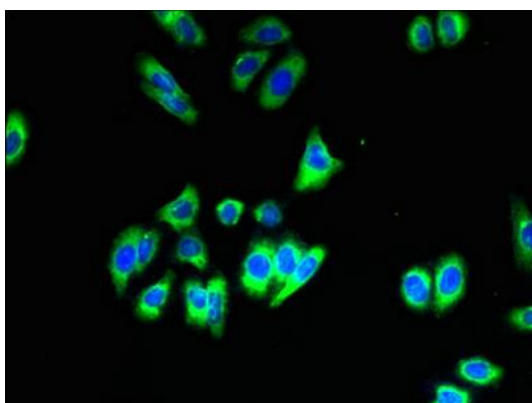
Secondary

Goat polyclonal to rabbit IgG at 1/10000 dilution

Predicted band size: 36, 40 kDa

Observed band size: 36 kDa

.



Immunofluorescent analysis of HepG2 cells using PACO29956 at dilution of 1:100 and Alexa Fluor 488-conjugated AffiniPure Goat Anti-Rabbit IgG(H+L).