

SLC25A14 Antibody



PACO29928

Product Information

Size:

50ug

Reactivity:

Human

Source:

Rabbit

Isotype:

IgG

Applications:

ELISA, IHC, IF

Recommended dilutions:

ELISA:1:2000-1:10000, IHC:1:20-1:200,
IF:1:50-1:200

Protein Background:

Participates in the mitochondrial proton leak measured in brain mitochondria.

Gene ID:

SLC25A14

Uniprot

O95258

Synonyms:

Brain mitochondrial carrier protein 1 (BMCP-1) (Mitochondrial uncoupling protein 5) (UCP 5) (Solute carrier family 25 member 14), SLC25A14, BMCP1 UCP5

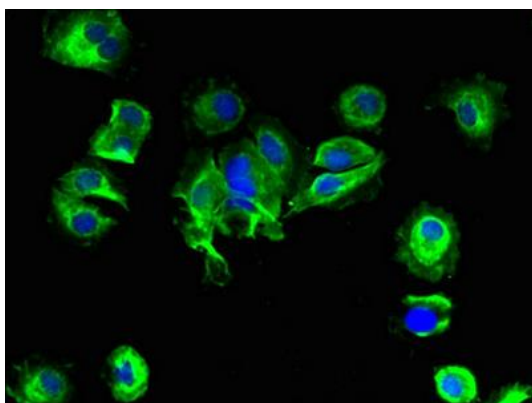
Immunogen:

Recombinant Human Brain mitochondrial carrier protein 1 protein (55-111AA).

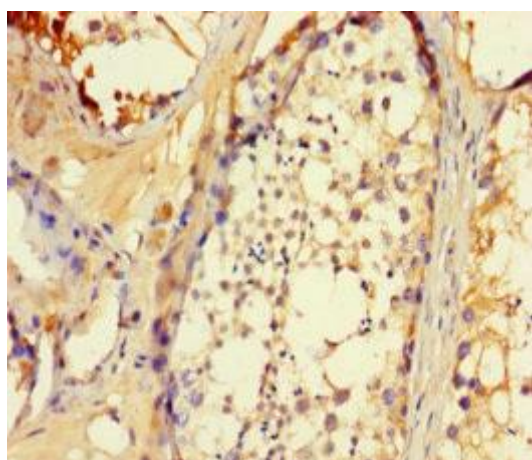
Storage:

Preservative: 0.03% Proclin 300. Constituents: 50% Glycerol, 0.01M PBS, PH 7.4

Product Images



Immunofluorescent analysis of MCF-7 cells using PACO29928 at dilution of 1:100 and Alexa Fluor 488-conjugated AffiniPure Goat Anti-Rabbit IgG(H+L).



Immunohistochemistry of paraffin-embedded human testis tissue using PACO29928 at dilution of 1:100.