

SLC17A3 Antibody



PACO29920

Product Information

Size:

50ug

Reactivity:

Human

Source:

Rabbit

Isotype:

IgG

Applications:

ELISA, IHC, IF

Recommended dilutions:

ELISA:1:2000-1:10000, IHC:1:20-1:200,
IF:1:50-1:200

Protein Background:

Isoform 2: voltage-driven, multispecific, organic anion transporter able to transport para-aminohippurate (PAH), estrone sulfate, estradiol-17-beta-glucuronide, bumetanide, and ochratoxin A. Isoform 2 functions as urate efflux transporter on the apical side of renal proximal tubule and is likely to act as an exit path for organic anionic drugs as well as urate in vivo. May be involved in actively transporting phosphate into cells via Na(+) cotransport.

Gene ID:

SLC17A3

Uniprot

O00476

Synonyms:

Sodium-dependent phosphate transport protein 4 (Na+)/PI cotransporter 4 (Sodium/phosphate cotransporter 4) (Solute carrier family 17 member 3), SLC17A3, NPT4

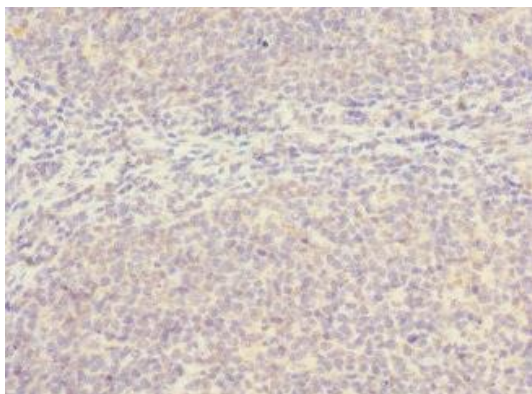
Immunogen:

Recombinant Human Sodium-dependent phosphate transport protein 4 protein (1-125AA).

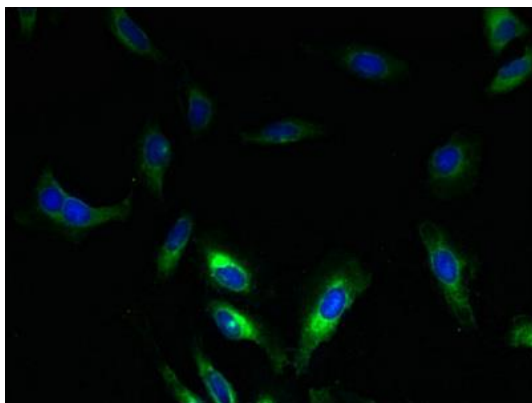
Storage:

Preservative: 0.03% Proclin 300. Constituents: 50% Glycerol, 0.01M PBS, PH 7.4

Product Images



Immunohistochemistry of paraffin-embedded human tonsil tissue using PACO29920 at dilution of 1:100.



Immunofluorescent analysis of HeLa cells using PACO29920 at dilution of 1:100 and Alexa Fluor 488-conjugated AffiniPure Goat Anti-Rabbit IgG(H+L).