

SLAMF8 Antibody



PACO29916

Product Information

Size:

50ug

Reactivity:

Human

Source:

Rabbit

Isotype:

IgG

Applications:

ELISA, IHC

Recommended dilutions:

ELISA:1:2000-1:10000, IHC:1:20-1:200

Protein Background:

May play a role in B-lineage commitment and/or modulation of signaling through the B-cell receptor.

Gene ID:

SLAMF8

Uniprot

Q9P0V8

Synonyms:

SLAM family member 8 (B-lymphocyte activator macrophage expressed) (BCM-like membrane protein) (CD antigen CD353), SLAMF8, BLAME

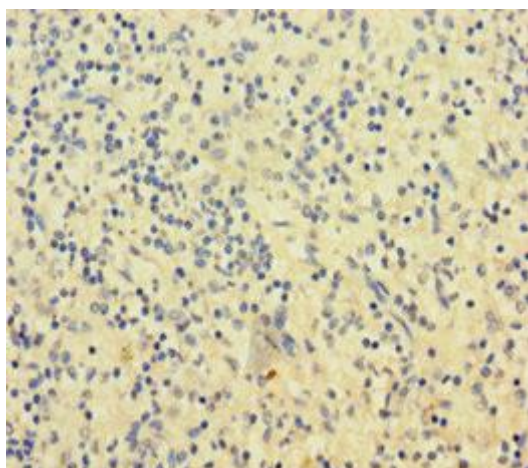
Immunogen:

Recombinant Human SLAM family member 8 protein (23-233AA).

Storage:

Preservative: 0.03% Proclin 300. Constituents: 50% Glycerol, 0.01M PBS, PH 7.4

Product Images



Immunohistochemistry of paraffin-embedded human spleen tissue using PACO29916 at dilution of 1:100.