

SIRPD Antibody



PACO29904

Product Information

Size:

50ug

Reactivity:

Human, Mouse

Source:

Rabbit

Isotype:

IgG

Applications:

ELISA, WB

Recommended dilutions:

ELISA:1:2000-1:10000, WB:1:1000-1:5000

Protein Background:**Gene ID:**

SIRPD

Uniprot

Q9H106

Synonyms:

Signal-regulatory protein delta (SIRP-delta) (Protein tyrosine phosphatase non-receptor type substrate 1-like 2), SIRPD, PTPNS1L2

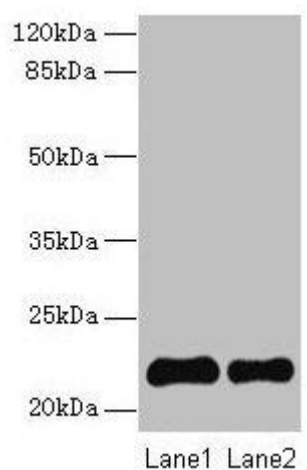
Immunogen:

Recombinant Human Signal-regulatory protein delta protein (30-197AA).

Storage:

Preservative: 0.03% Proclin 300. Constituents: 50% Glycerol, 0.01M PBS, PH 7.4

Product Images



Western blot

All lanes: SIRPD antibody at 14 μ g/ml

Lane 1: 293T whole cell lysate

Lane 2: Mouse spleen tissue

Secondary

Goat polyclonal to rabbit IgG at 1/10000 dilution

Predicted band size: 22 kDa

Observed band size: 22 kDa

.