

SFT2D2 Antibody



PACO29860

Product Information

Size:

50ug

Reactivity:

Human, Mouse

Source:

Rabbit

Isotype:

IgG

Applications:

ELISA, WB, IF

Recommended dilutions:

ELISA:1:2000-1:10000, WB:1:1000-1:5000,
IF:1:50-1:200

Protein Background:

May be involved in fusion of retrograde transport vesicles derived from an endocytic compartment with the Golgi complex.

Gene ID:

SFT2D2

Uniprot

O95562

Synonyms:

Vesicle transport protein SFT2B (SFT2 domain-containing protein 2), SFT2D2

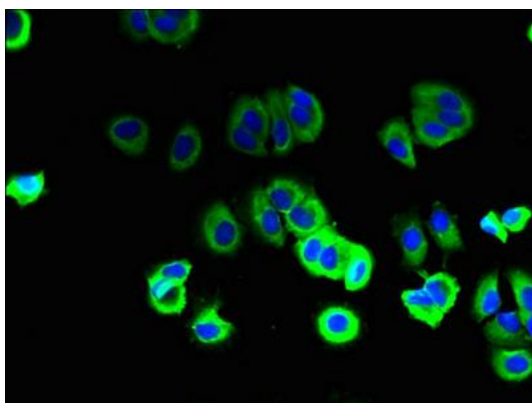
Immunogen:

Recombinant Human Vesicle transport protein SFT2B protein (1-36AA).

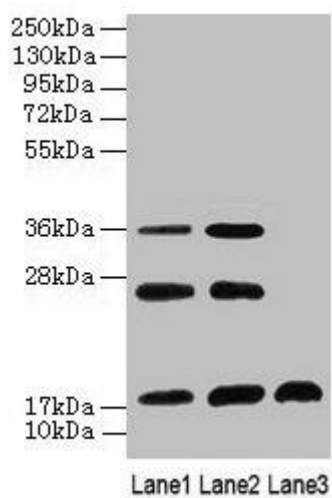
Storage:

Preservative: 0.03% Proclin 300. Constituents: 50% Glycerol, 0.01M PBS, PH 7.4

Product Images



Immunofluorescent analysis of MCF-7 cells using PACO29860 at dilution of 1:100 and Alexa Fluor 488-conjugated AffiniPure Goat Anti-Rabbit IgG(H+L).



Western Blot

All lanes: SFT2D2 antibody at 8 μ g/ml

Lane 1: Mouse liver tissue

Lane 2: Mouse kidney tissue

Lane 3: Mouse thymus tissue

Secondary

Goat polyclonal to rabbit IgG at 1/10000 dilution

Predicted band size: 18 kDa

Observed band size: 18, 26, 36 kDa