

Serpinh1 Antibody



PACO29852

Product Information

Size:

50ug

Reactivity:

Mouse, Human

Source:

Rabbit

Isotype:

IgG

Applications:

ELISA, WB

Recommended dilutions:

ELISA:1:2000-1:10000, WB:1:500-1:2000

Protein Background:

Binds specifically to collagen. Could be involved as a chaperone in the biosynthetic pathway of collagen.

Gene ID:

Serpinh1

Uniprot

P19324

Synonyms:

Serpin H1 (47 kDa heat shock protein) (Collagen-binding protein) (Colligin) (Serine protease inhibitor J6), Serpinh1, Cbp1 Hsp47

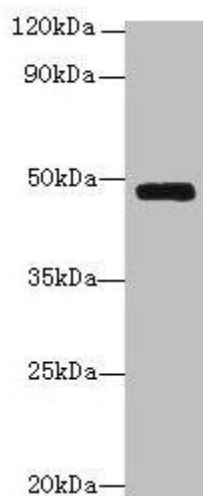
Immunogen:

Recombinant Mouse Serpin H1 protein (18-417AA).

Storage:

Preservative: 0.03% Proclin 300. Constituents: 50% Glycerol, 0.01M PBS, PH 7.4

Product Images



Western blot

All lanes: Serpinh1 antibody at 6 μ g/ml + Jurkat whole cell lysate

Secondary

Goat polyclonal to rabbit IgG at 1/10000 dilution

Predicted band size: 47 kDa

Observed band size: 47 kDa