

PACO29840

Product Information

Size:

50ug

Reactivity:

Rat, Human

Source:

Rabbit

Isotype:

IgG

Applications:

ELISA, WB

Recommended dilutions:

ELISA:1:2000-1:10000, WB:1:1000-1:5000

Protein Background:

Inhibits urokinase-type plasminogen activator.

Gene ID:

Serpib2

Uniprot

P29524

Synonyms:

Plasminogen activator inhibitor 2 type A (PAI-2) (PAI2A) (Serpib B2), Serpib2, Pai2, Planh2

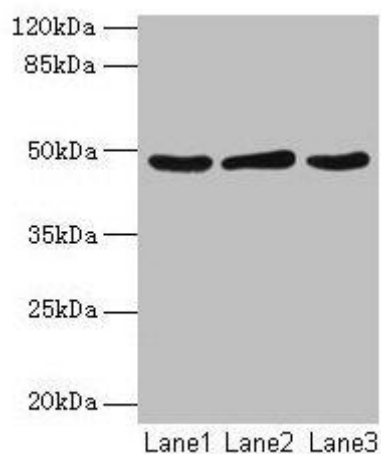
Immunogen:

Recombinant Rat Plasminogen activator inhibitor 2 type A protein (1-416AA).

Storage:

Preservative: 0.03% Proclin 300. Constituents: 50% Glycerol, 0.01M PBS, PH 7.4

Product Images



Western blot

All lanes: Serpinb2 antibody at 2 μ g/ml

Lane 1: MCF-7 whole cell lysate

Lane 2: 293T whole cell lysate

Lane 3: Rat liver tissue

Secondary

Goat polyclonal to rabbit IgG at 1/10000 dilution

Predicted band size: 48 kDa

Observed band size: 48 kDa

.