

PACO29796

---

## Product Information

**Size:**

50ug

**Reactivity:**

Human, Mouse

**Source:**

Rabbit

**Isotype:**

IgG

**Applications:**

ELISA, WB, IHC

**Recommended dilutions:**

ELISA:1:2000-1:10000, WB:1:1000-1:5000,  
IHC:1:20-1:200

**Protein Background:**

Has low serine dehydratase and threonine dehydratase activity.

**Gene ID:**

SDSL

**Uniprot**

Q96GA7

**Synonyms:**

Serine dehydratase-like (L-serine deaminase) (L-serine dehydratase/L-threonine deaminase) (L-threonine dehydratase) (TDH) (EC 4.3.1.19) (Serine dehydratase 2) (SDH 2) (EC 4.3.1.17), SDSL

**Immunogen:**

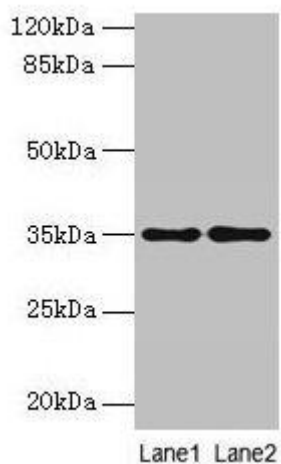
Recombinant Human Serine dehydratase-like protein (39-169AA).

**Storage:**

Preservative: 0.03% Proclin 300. Constituents: 50% Glycerol, 0.01M PBS, PH 7.4

## Product Images

---



### Western blot

All lanes: SDSL antibody at 4 $\mu$ g/ml

Lane 1: HepG2 whole cell lysate

Lane 2: Mouse liver tissue

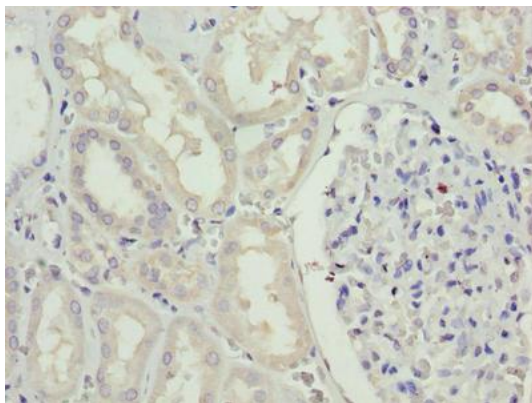
Secondary

Goat polyclonal to rabbit IgG at 1/10000 dilution

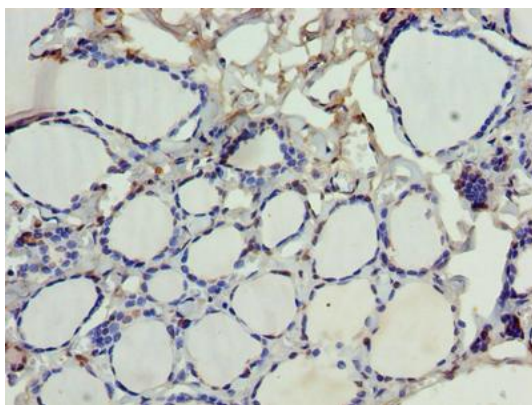
Predicted band size: 35 kDa

Observed band size: 35 kDa

.



Immunohistochemistry of paraffin-embedded human kidney tissue using PACO29796 at dilution of 1:100.



Immunohistochemistry of paraffin-embedded human thyroid tissue using PACO29796 at dilution of 1:100.