

SCLT1 Antibody



PACO29760

Product Information

Size:

50ug

Reactivity:

Human

Source:

Rabbit

Isotype:

IgG

Applications:

ELISA, IHC

Recommended dilutions:

ELISA:1:2000-1:10000, IHC:1:20-1:200

Protein Background:

Adapter protein that links SCN10A to clathrin. Regulates SCN10A channel activity, possibly by promoting channel internalization.

Gene ID:

SCLT1

Uniprot

Q96NL6

Synonyms:

Sodium channel and clathrin linker 1 (Sodium channel-associated protein 1), SCLT1, SAP1

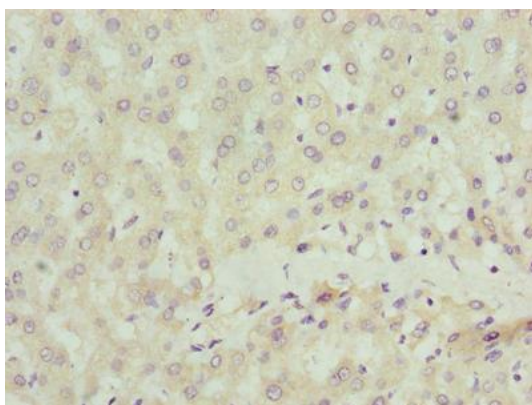
Immunogen:

Recombinant Human Sodium channel and clathrin linker 1 protein (1-79AA).

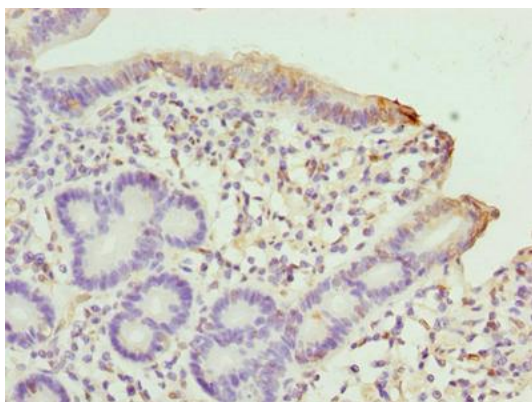
Storage:

Preservative: 0.03% Proclin 300. Constituents: 50% Glycerol, 0.01M PBS, PH 7.4

Product Images



Immunohistochemistry of paraffin-embedded human liver tissue using PACO29760 at dilution of 1:100.



Immunohistochemistry of paraffin-embedded human duodenum tissue using PACO29760 at dilution of 1:100.