

RS1 Antibody



PACO29656

Product Information

Size:

50ug

Reactivity:

Human

Source:

Rabbit

Isotype:

IgG

Applications:

ELISA, IHC

Recommended dilutions:

ELISA:1:2000-1:10000, IHC:1:20-1:200

Protein Background:

May be active in cell adhesion processes during retinal development.

Gene ID:

RS1

Uniprot

O15537

Synonyms:

Retinoschisin (X-linked juvenile retinoschisis protein), RS1, XLRS1

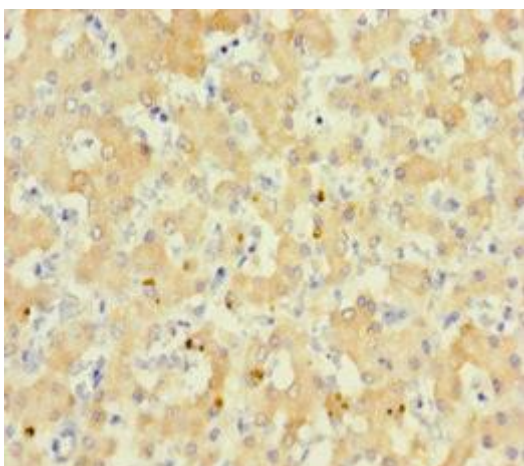
Immunogen:

Recombinant Human Retinoschisin protein (24-224AA).

Storage:

Preservative: 0.03% Proclin 300. Constituents: 50% Glycerol, 0.01M PBS, PH 7.4

Product Images



Immunohistochemistry of paraffin-embedded human liver tissue using PACO29656 at dilution of 1:100.