

PACO29524

---

## Product Information

**Size:**

50ug

**Reactivity:**

Human

**Source:**

Rabbit

**Isotype:**

IgG

**Applications:**

ELISA, IHC

**Recommended dilutions:**

ELISA:1:2000-1:10000, IHC:1:20-1:200

**Protein Background:**

Does not exhibit any ribonuclease activity.

**Gene ID:**

RNASE9

**Uniprot**

P60153

**Synonyms:**

Inactive ribonuclease-like protein 9, RNASE9

**Immunogen:**

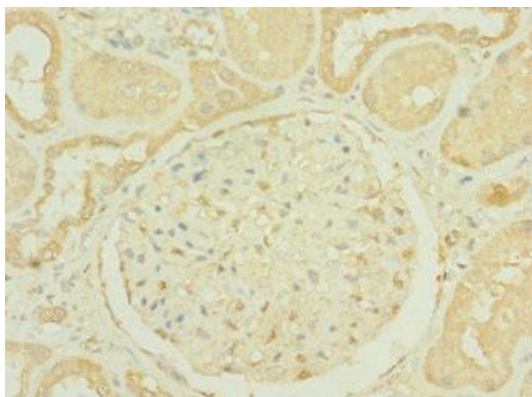
Recombinant Human Inactive ribonuclease-like protein 9 protein (27-205AA).

**Storage:**

Preservative: 0.03% Proclin 300. Constituents: 50% Glycerol, 0.01M PBS, PH 7.4

## Product Images

---



Immunohistochemistry of paraffin-embedded human kidney tissue using PACO29524 at dilution of 1:100.