

PACO29480

Product Information

Size:

50ug

Reactivity:

Rat, Human

Source:

Rabbit

Isotype:

IgG

Applications:

ELISA, WB

Recommended dilutions:

ELISA:1:2000-1:10000, WB:1:500-1:2000

Protein Background:

Gluconolactonase with low activity towards other sugar lactones, including gulonolactone and galactonolactone. Catalyzes a key step in ascorbic acid, (vitamin C) biosynthesis. Can also hydrolyze diisopropyl phosphorofluoridate and phenylacetate (in vitro). Calcium-binding protein. Modulates Ca(2+) signaling, and Ca(2+)-dependent cellular processes and enzyme activities.

Gene ID:

Rgn

Uniprot

Q03336

Synonyms:

Regucalcin (RC) (Gluconolactonase) (GNL) (EC 3.1.1.17) (Senescence marker protein 30) (SMP-30), Rgn, Smp30

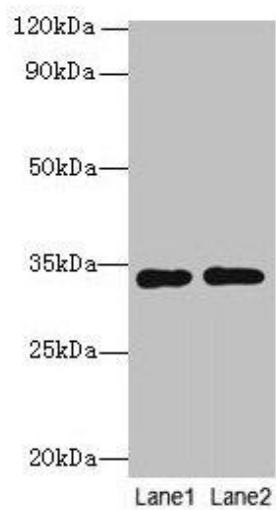
Immunogen:

Recombinant Rat Regucalcin protein (1-299AA).

Storage:

Preservative: 0.03% Proclin 300. Constituents: 50% Glycerol, 0.01M PBS, PH 7.4

Product Images



Western blot

All lanes: Rgn antibody at 8 μ g/ml

Lane 1: A549 whole cell lysate

Lane 2: HCT116 whole cell lysate

Secondary

Goat polyclonal to rabbit IgG at 1/10000 dilution

Predicted band size: 34 kDa

Observed band size: 34 kDa

.