

RER1 Antibody



PACO29460

Product Information

Size:

50ug

Reactivity:

Human

Source:

Rabbit

Isotype:

IgG

Applications:

ELISA, IHC, IF

Recommended dilutions:

ELISA:1:2000-1:10000, IHC:1:20-1:200,
IF:1:50-1:200

Protein Background:

Involved in the retrieval of endoplasmic reticulum membrane proteins from the early Golgi compartment.

Gene ID:

RER1

Uniprot

O15258

Synonyms:

Protein RER1, RER1

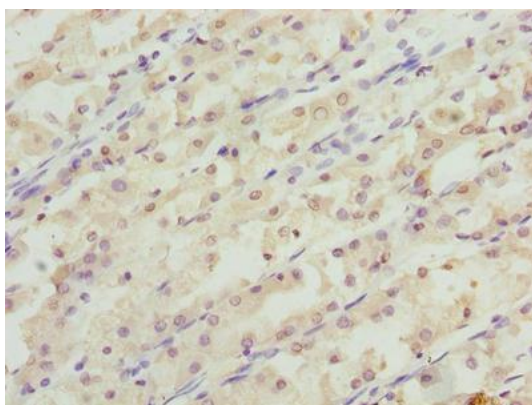
Immunogen:

Recombinant Human Protein RER1 protein (85-139AA).

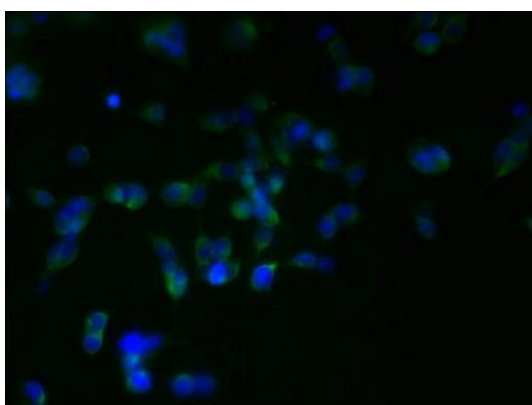
Storage:

Preservative: 0.03% Proclin 300. Constituents: 50% Glycerol, 0.01M PBS, PH 7.4

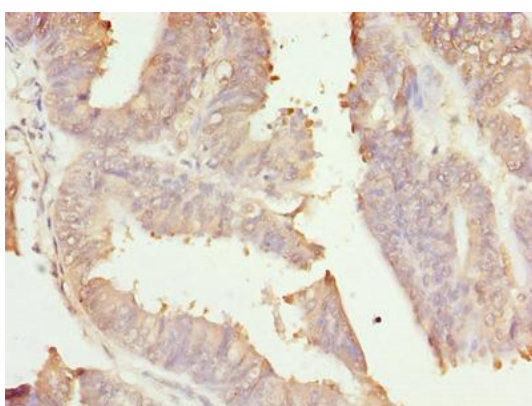
Product Images



Immunohistochemistry of paraffin-embedded human gastric cancer using PACO29460 at dilution of 1:100.



Immunofluorescent analysis of 293T cells using PACO29460 at dilution of 1:100 and Alexa Fluor 488-conjugated AffiniPure Goat Anti-Rabbit IgG(H+L).



Immunohistochemistry of paraffin-embedded human endometrial cancer using PACO29460 at dilution of 1:100.