

Product Information

Size:

50ug

Reactivity:

Rat, Mouse

Source:

Rabbit

Isotype:

IgG

Applications:

ELISA, WB

Recommended dilutions:

ELISA:1:2000-1:10000, WB:1:1000-1:5000

Protein Background:

Bactericidal C-type lectin which acts exclusively against Gram-positive bacteria and mediates bacterial killing by binding to surface-exposed carbohydrate moieties of peptidoglycan. Restricts bacterial colonization of the intestinal epithelial surface and consequently limits activation of adaptive immune responses by the microbiota. The uncleaved form has bacteriostatic activity, whereas the cleaved form has bactericidal activity against *L. monocytogenes* and methicillin-resistant *S.aureus*. Regulates keratinocyte proliferation and differentiation after skin injury.

Gene ID:

Reg3g

Uniprot

P42854

Synonyms:

Regenerating islet-derived protein 3-gamma (REG-3-gamma) (Pancreatitis-associated protein 3) (Regenerating islet-derived protein III-gamma) (Reg III-gamma) [Cleaved into: Regenerating islet-derived protein 3-gamma 16.5 kDa form; Regenerating islet-derived protein 3-gamma 15 kDa form], Reg3g, Pap3

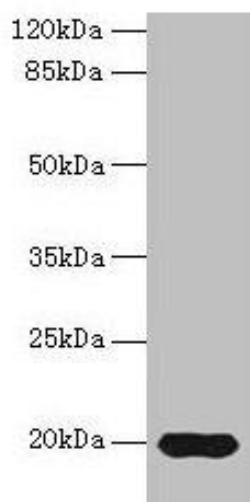
Immunogen:

Recombinant Rat Regenerating islet-derived protein 3-γ protein (27-174AA).

Storage:

Preservative: 0.03% Proclin 300. Constituents: 50% Glycerol, 0.01M PBS, PH 7.4

Product Images



Western blot

All lanes: Reg3g antibody at 14 μ g/ml + Mouse kidney tissue

Secondary

Goat polyclonal to rabbit IgG at 1/10000 dilution

Predicted band size: 20 kDa

Observed band size: 20 kDa

.