

## Product Information

**Size:**

50ug

**Reactivity:**

Human, Mouse

**Source:**

Rabbit

**Isotype:**

IgG

**Applications:**

ELISA, WB, IHC, IF

**Recommended dilutions:**

ELISA:1:2000-1:10000, WB:1:2000-1:10000,  
IHC:1:20-1:200, IF:1:50-1:200

**Protein Background:**

May be involved in post-transcriptional processing, most probably in mRNA splicing. Binds to RNA homopolymers, with a preference for poly(G) and poly(U) and little for poly(A).

**Gene ID:**

RBM10

**Uniprot**

P98175

**Synonyms:**

RNA-binding protein 10 (G patch domain-containing protein 9) (RNA-binding motif protein 10) (RNA-binding protein S1-1) (S1-1), RBM10, DXS8237E GPATC9 GPATCH9 KIAA0122

**Immunogen:**

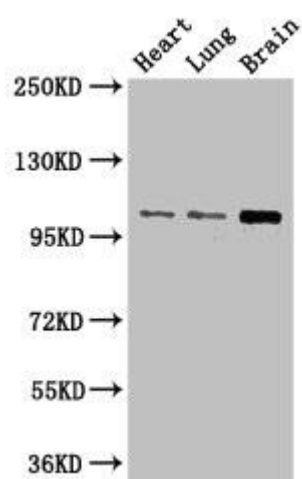
Recombinant Human RNA-binding protein 10 protein (501-700AA).

**Storage:**

Preservative: 0.03% Proclin 300. Constituents: 50% Glycerol, 0.01M PBS, PH 7.4

## Product Images

---



### Western Blot

Positive WB detected in: Mouse heart tissue, Mouse lung tissue, Mouse brain tissue

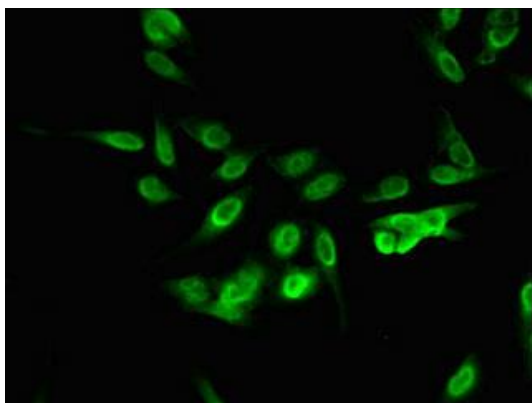
All lanes: RBM10 antibody at 3 $\mu$ g/ml

Secondary

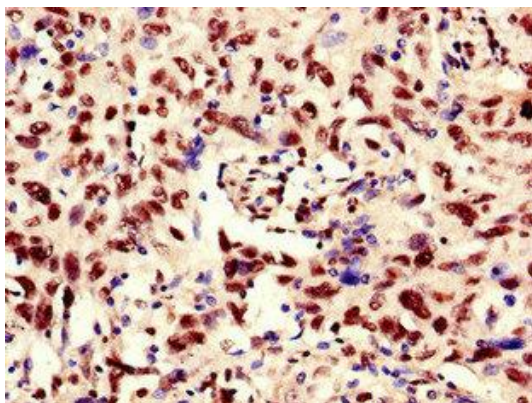
Goat polyclonal to rabbit IgG at 1/50000 dilution

Predicted band size: 104, 95, 111 kDa

Observed band size: 104 kDa



Immunofluorescent analysis of HeLa cells using PACO29396 at dilution of 1:100 and Alexa Fluor 488-conjugated AffiniPure Goat Anti-Rabbit IgG(H+L).



Immunohistochemistry of paraffin-embedded human lung cancer using PACO29396 at dilution of 1:100.