

RASA1 Antibody



PACO29380

Product Information

Size:

50ug

Reactivity:

Human, Mouse

Source:

Rabbit

Isotype:

IgG

Applications:

ELISA, WB, IF

Recommended dilutions:

ELISA:1:2000-1:10000, WB:1:500-1:5000,
IF:1:50-1:200

Protein Background:

Inhibitory regulator of the Ras-cyclic AMP pathway. Stimulates the GTPase of normal but not oncogenic Ras p21; this stimulation may be further increased in the presence of NCK1.

Gene ID:

RASA1

Uniprot

P20936

Synonyms:

Ras GTPase-activating protein 1 (GAP) (GTPase-activating protein) (RasGAP) (Ras p21 protein activator) (p120GAP), RASA1, GAP RASA

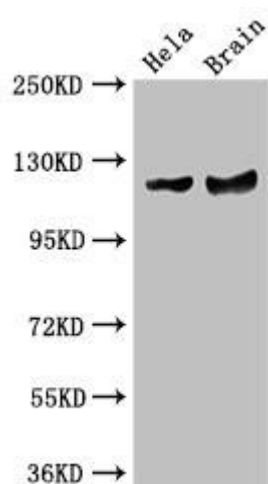
Immunogen:

Recombinant Human Ras GTPase-activating protein 1 protein (201-500AA).

Storage:

Preservative: 0.03% Proclin 300. Constituents: 50% Glycerol, 0.01M PBS, PH 7.4

Product Images



Western Blot

Positive WB detected in: HeLa whole cell lysate, Mouse brain tissue

All lanes: RASA1 antibody at 3.5µg/ml

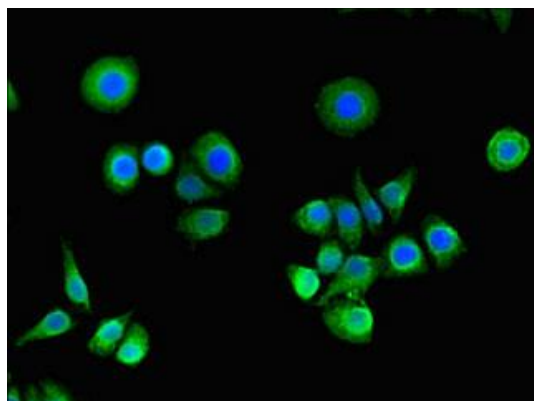
Secondary

Goat polyclonal to rabbit IgG at 1/50000 dilution

Predicted band size: 117, 101, 59, 102 kDa

Observed band size: 117 kDa

.



Immunofluorescent analysis of PC-3 cells using PACO29380 at dilution of 1:100 and Alexa Fluor 488-conjugated AffiniPure Goat Anti-Rabbit IgG(H+L).