

### Product Information

**Size:**

50ug

**Reactivity:**

Human

**Source:**

Rabbit

**Isotype:**

IgG

**Applications:**

ELISA, IHC

**Recommended dilutions:**

ELISA:1:2000-1:10000, IHC:1:20-1:200

**Protein Background:**

Plasma membrane-associated small GTPase which cycles between an active GTP-bound and inactive GDP-bound state. In active state binds to a variety of effector proteins to regulate cellular responses, such as secretory processes, phagocytose of apoptotic cells and epithelial cell polarization. Augments the production of reactive oxygen species (ROS) by NADPH oxidase.

**Gene ID:**

RAC2

**Uniprot**

P15153

**Synonyms:**

Ras-related C3 botulinum toxin substrate 2 (GX) (Small G protein) (p21-Rac2), RAC2

**Immunogen:**

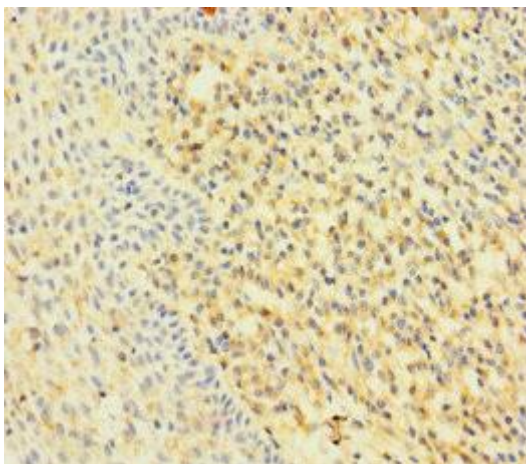
Recombinant Human Ras-related C3 botulinum toxin substrate 2 protein (1-189AA).

**Storage:**

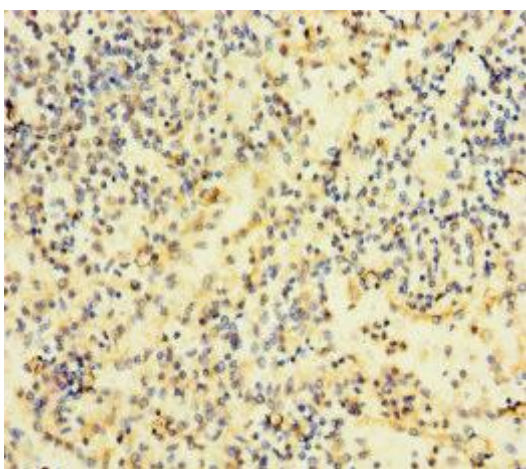
Preservative: 0.03% Proclin 300. Constituents: 50% Glycerol, 0.01M PBS, PH 7.4

## Product Images

---



Immunohistochemistry of paraffin-embedded human tonsil tissue using PACO29352 at dilution of 1:100.



Immunohistochemistry of paraffin-embedded human spleen tissue using PACO29352 at dilution of 1:100.