

RAB25 Antibody



PACO29316

Product Information

Size:

50ug

Reactivity:

Human, Mouse

Source:

Rabbit

Isotype:

IgG

Applications:

ELISA, WB, IHC, IF

Recommended dilutions:

ELISA:1:2000-1:10000, WB:1:500-1:5000,
IHC:1:20-1:200, IF:1:50-1:200

Protein Background:

Involved in the regulation of cell survival. Promotes invasive migration of cells in which it functions to localize and maintain integrin alpha-V/beta-1 at the tips of extending pseudopodia. Involved in the regulation of epithelial morphogenesis through the control of CLDN4 expression and localization at tight junctions. May selectively regulate the apical recycling pathway. Together with MYO5B regulates transcytosis.

Gene ID:

RAB25

Uniprot

P57735

Synonyms:

Ras-related protein Rab-25 (CATX-8), RAB25, CATX8

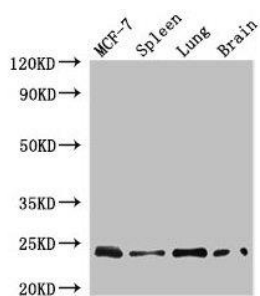
Immunogen:

Recombinant Human Ras-related protein Rab-25 protein (1-210AA).

Storage:

Preservative: 0.03% Proclin 300. Constituents: 50% Glycerol, 0.01M PBS, PH 7.4

Product Images



Western Blot

Positive WB detected in: MCF-7 whole cell lysate, Mouse spleen tissue, Mouse lung tissue, Mouse brain tissue

All lanes: RAB25 antibody at 4 μ g/ml

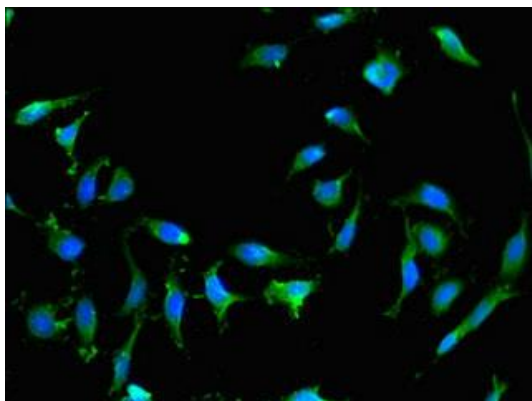
Secondary

Goat polyclonal to rabbit IgG at 1/50000 dilution

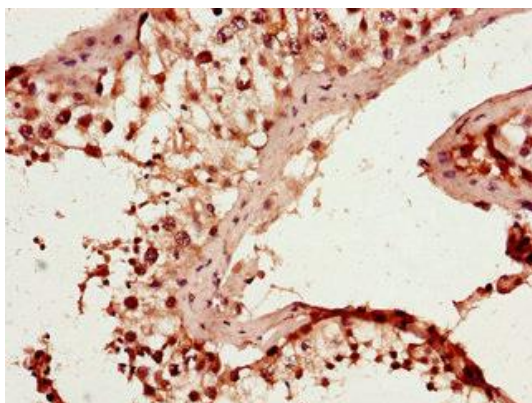
Predicted band size: 24 kDa

Observed band size: 24 kDa

.



Immunofluorescent analysis of HeLa cells using PACO29316 at dilution of 1:100 and Alexa Fluor 488-conjugated AffiniPure Goat Anti-Rabbit IgG(H+L).



Immunohistochemistry of paraffin-embedded human testis tissue using PACO29316 at dilution of 1:100.