

PSMD10 Antibody



PACO29236

Product Information

Size:

50ug

Reactivity:

Human

Source:

Rabbit

Isotype:

IgG

Applications:

ELISA, IHC, IF

Recommended dilutions:

ELISA:1:2000-1:10000, IHC:1:50-1:200,
IF:1:200-1:500

Protein Background:**Gene ID:**

PSMD10

Uniprot

O75832

Synonyms:

26S proteasome non-ATPase regulatory subunit 10 (26S proteasome regulatory subunit p28) (Gankyrin) (p28(GANK)), PSMD10

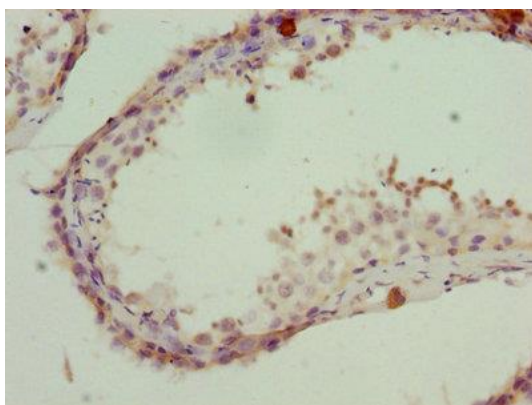
Immunogen:

Recombinant Human 26S proteasome non-ATPase regulatory subunit 10 protein (1-226AA).

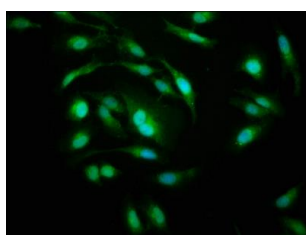
Storage:

Preservative: 0.03% Proclin 300. Constituents: 50% Glycerol, 0.01M PBS, PH 7.4

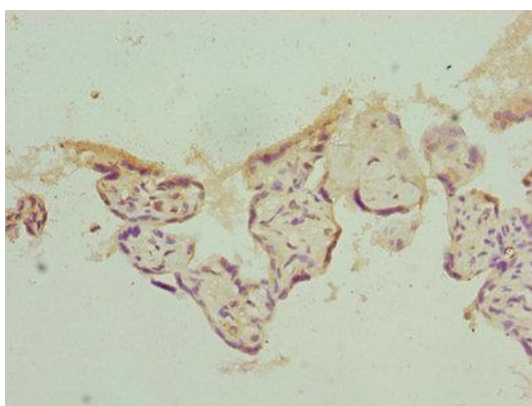
Product Images



Immunohistochemistry of paraffin-embedded human testis tissue using PACO29236 at dilution of 1:100.



Immunofluorescence staining of HeLa cells with PACO29236 at 1:200, counter-stained with DAPI. The cells were fixed in 4% formaldehyde, permeabilized using 0.2% Triton X-100 and blocked in 10% normal Goat Serum. The cells were then incubated with the antibody overnight at 4°C. The secondary antibody was Alexa Fluor 488-conjugated AffiniPure Goat Anti-Rabbit IgG(H+L).



Immunohistochemistry of paraffin-embedded human placenta tissue using PACO29236 at dilution of 1:100.