

# PSMC6 Antibody



PACO29232

---

## Product Information

**Size:**

50ug

**Reactivity:**

Human, Mouse, Rat

**Source:**

Rabbit

**Isotype:**

IgG

**Applications:**

ELISA, WB, IHC

**Recommended dilutions:**

ELISA:1:2000-1:10000, WB:1:500-1:5000,  
IHC:1:500-1:2000

**Protein Background:**

The 26S protease is involved in the ATP-dependent degradation of ubiquitinated proteins. The regulatory (or ATPase) complex confers ATP dependency and substrate specificity to the 26S complex.

**Gene ID:**

PSMC6

**Uniprot**

P62333

**Synonyms:**

26S proteasome regulatory subunit 10B (26S proteasome AAA-ATPase subunit RPT4) (Proteasome 26S subunit ATPase 6) (Proteasome subunit p42), PSMC6, SUG2

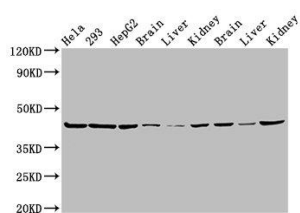
**Immunogen:**

Recombinant Human 26S proteasome regulatory subunit 10B protein (1-260AA).

**Storage:**

Preservative: 0.03% Proclin 300. Constituents: 50% Glycerol, 0.01M PBS, PH 7.4

## Product Images



### Western Blot

Positive WB detected in: HeLa whole cell lysate, 293 whole cell lysate, HepG2 whole cell lysate, Mouse brain tissue, Mouse liver tissue, Mouse kidney tissue, Rat brain tissue, Rat liver tissue, Rat kidney tissue

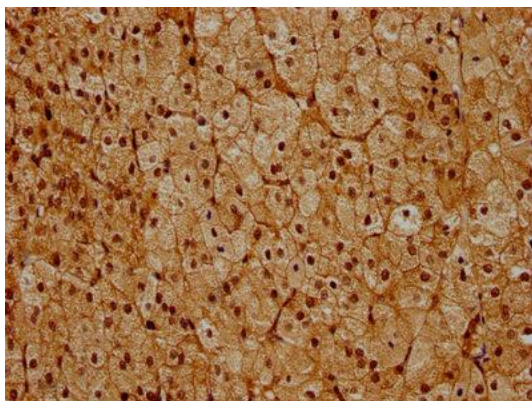
All lanes: PSMC6 antibody at 3 $\mu$ g/ml

### Secondary

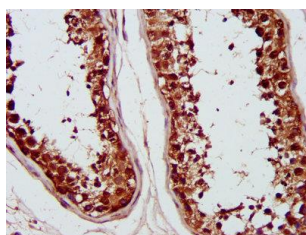
Goat polyclonal to rabbit IgG at 1/50000 dilution

Predicted band size: 45 kDa

Observed band size: 45 kDa



IHC image of PACO29232 diluted at 1:600 and staining in paraffin-embedded human adrenal gland tissue performed on a Leica Bond<sup>TM</sup> system. After dewaxing and hydration, antigen retrieval was mediated by high pressure in a citrate buffer (pH 6.0). Section was blocked with 10% normal goat serum 30min at RT. Then primary antibody (1% BSA) was incubated at 4 $^{\circ}$ C overnight. The primary is detected by a biotinylated secondary antibody and visualized using an HRP conjugated SP system.



IHC image of PACO29232 diluted at 1:1200 and staining in paraffin-embedded human testis tissue performed on a Leica Bond<sup>TM</sup> system. After dewaxing and hydration, antigen retrieval was mediated by high pressure in a citrate buffer (pH 6.0). Section was blocked with 10% normal goat serum 30min at RT. Then primary antibody (1% BSA) was incubated at 4 $^{\circ}$ C overnight. The primary is detected by a biotinylated secondary antibody and visualized using an HRP conjugated SP system.