

PRSS23 Antibody



PACO29212

Product Information

Size:

50ug

Reactivity:

Human

Source:

Rabbit

Isotype:

IgG

Applications:

ELISA, IHC

Recommended dilutions:

ELISA:1:2000-1:10000, IHC:1:20-1:200

Protein Background:

Gene ID:

PRSS23

Uniprot

O95084

Synonyms:

Serine protease 23 (EC 3.4.21. -) (Putative secreted protein Zsig13), PRSS23, ZSIG13

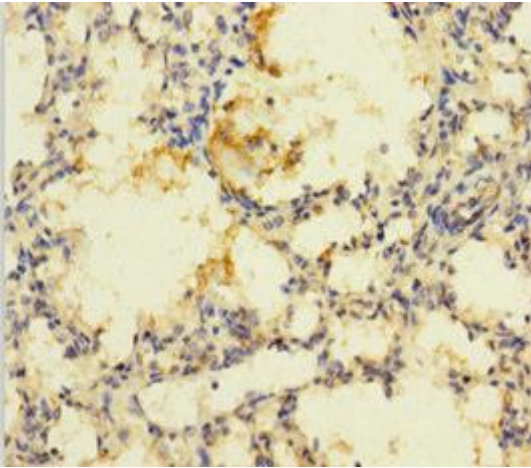
Immunogen:

Recombinant Human Serine protease 23 protein (20-383AA).

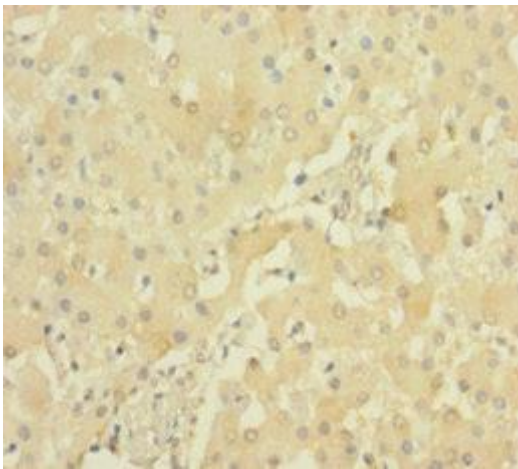
Storage:

Preservative: 0.03% Proclin 300. Constituents: 50% Glycerol, 0.01M PBS, PH 7.4

Product Images



Immunohistochemistry of paraffin-embedded human lung tissue using PACO29212 at dilution of 1:100.



Immunohistochemistry of paraffin-embedded human liver tissue using PACO29212 at dilution of 1:100.