

PPME1 Antibody



PACO29120

Product Information

Size:

50ug

Reactivity:

Human, Mouse

Source:

Rabbit

Isotype:

IgG

Applications:

ELISA, WB, IHC

Recommended dilutions:

ELISA:1:2000-1:10000, WB:1:500-1:2000,
IHC:1:20-1:200

Protein Background:

Demethylates proteins that have been reversibly carboxymethylated. Demethylates PPP2CB (in vitro) and PPP2CA. Binding to PPP2CA displaces the manganese ion and inactivates the enzyme.

Gene ID:

PPME1

Uniprot

Q9Y570

Synonyms:

Protein phosphatase methylesterase 1 (PME-1) (EC 3.1.1.89), PPME1, PME1

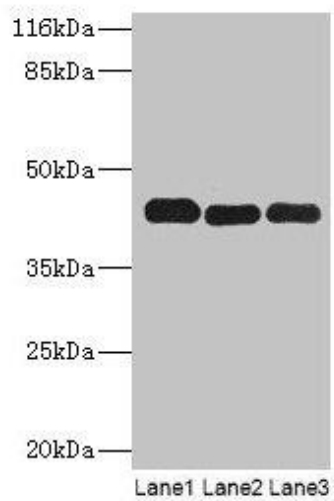
Immunogen:

Recombinant Human Protein phosphatase methylesterase 1 protein (201-386AA).

Storage:

Preservative: 0.03% Proclin 300. Constituents: 50% Glycerol, 0.01M PBS, PH 7.4

Product Images



Western blot

All lanes: PPME1 antibody at 2 μ g/ml

Lane 1: A549 whole cell lysate

Lane 2: Hela whole cell lysate

Lane 3: Mouse brain tissue

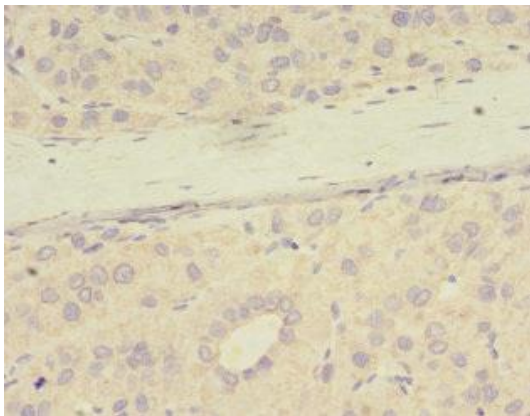
Secondary

Goat polyclonal to rabbit IgG at 1/10000 dilution

Predicted band size: 43, 23, 19, 44 kDa

Observed band size: 43 kDa

.



Immunohistochemistry of paraffin-embedded human liver cancer using PACO29120 at dilution of 1:100.