

PPEF1 Antibody



PACO29108

Product Information

Size:

50ug

Reactivity:

Human, Mouse

Source:

Rabbit

Isotype:

IgG

Applications:

ELISA, WB, IHC

Recommended dilutions:

ELISA:1:2000-1:10000, WB:1:500-1:2000,
IHC:1:20-1:200

Protein Background:

May have a role in the recovery or adaptation response of photoreceptors. May have a role in development.

Gene ID:

PPEF1

Uniprot

O14829

Synonyms:

Serine/threonine-protein phosphatase with EF-hands 1 (PPEF-1) (EC 3.1.3.16) (Protein phosphatase with EF calcium-binding domain) (PPEF) (Serine/threonine-protein phosphatase 7) (PP7), PPEF1, PPEF PPP7C

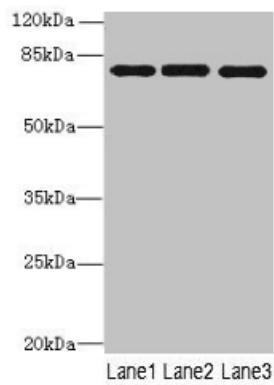
Immunogen:

Recombinant Human Serine/threonine-protein phosphatase with EF-hands 1 protein (301-500AA).

Storage:

Preservative: 0.03% Proclin 300. Constituents: 50% Glycerol, 0.01M PBS, PH 7.4

Product Images



Western blot

All lanes: PPEF1 antibody at 1 μ g/ml

Lane 1: U251 whole cell lysate

Lane 2: A549 whole cell lysate

Lane 3: Mouse gonadal tissue

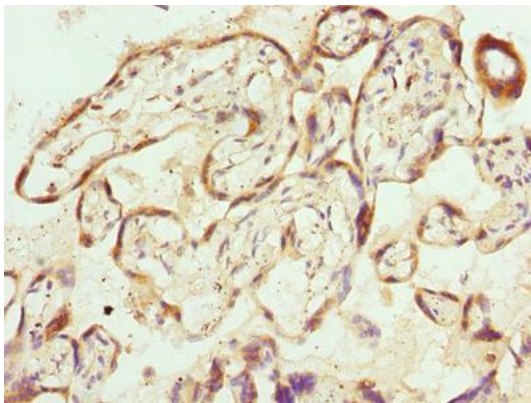
Secondary

Goat polyclonal to rabbit IgG at 1/10000 dilution

Predicted band size: 76, 70, 73, 45, 69 kDa

Observed band size: 76 kDa

.



Immunohistochemistry of paraffin-embedded human placenta tissue using PACO29108 at dilution of 1:100.